



The Church of Scotland

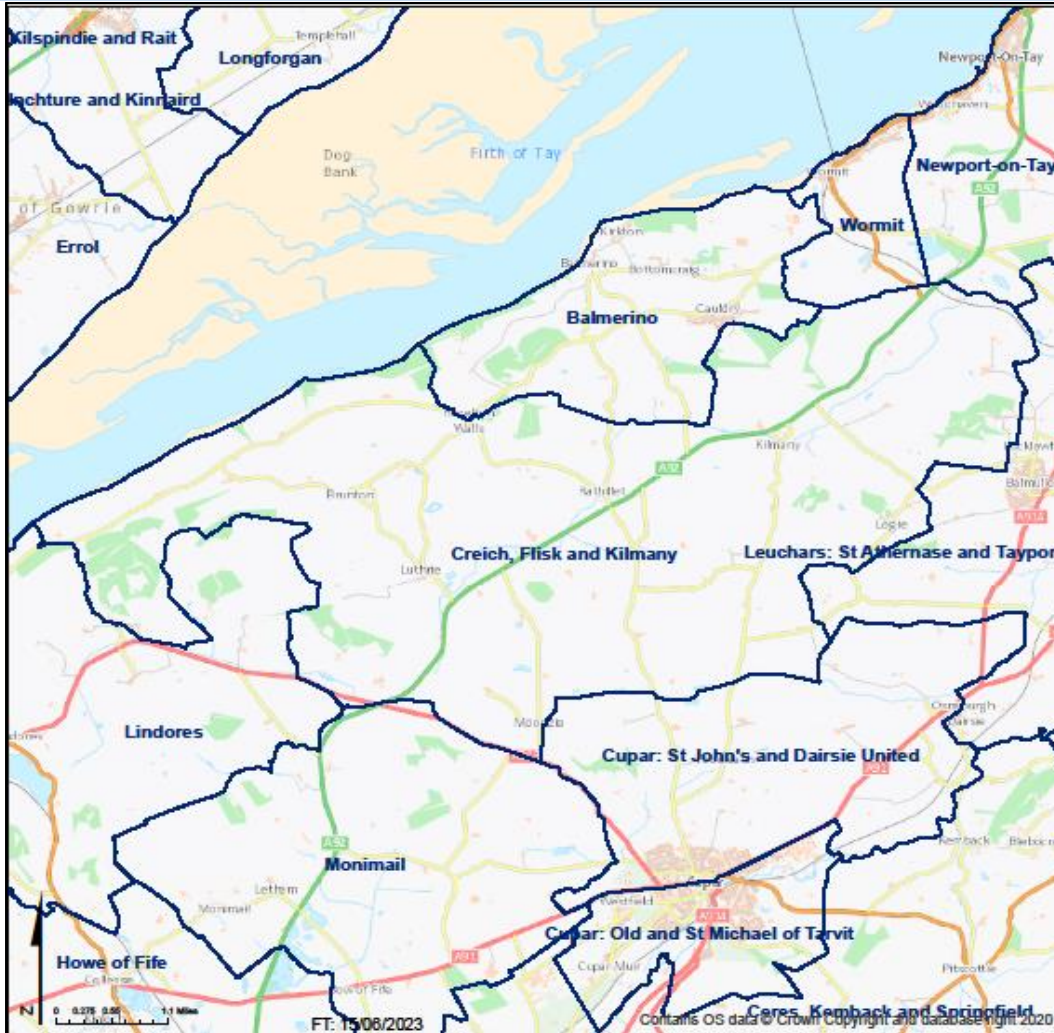
Parish: CREICH, FLISK AND KILMANY

Presbytery

Fife

Parish

CREICH, FLISK AND KILMANY

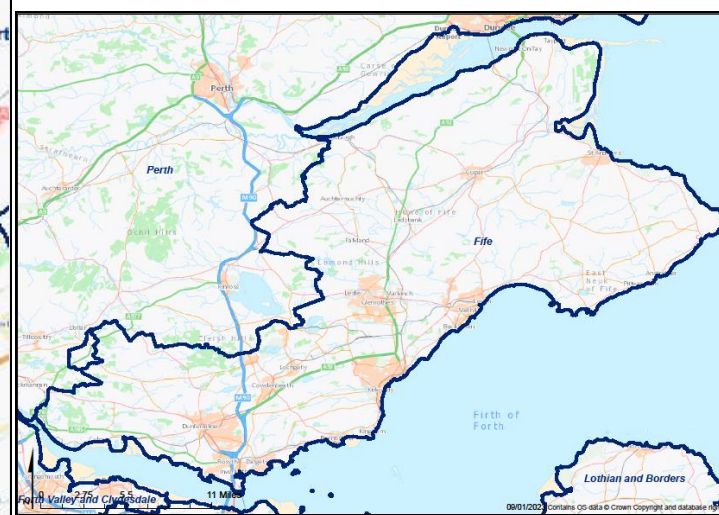


STATISTICS FOR MISSION

This profile of selected Census data has been prepared by the Statistics for Mission Group of the Church of Scotland for use by Congregations, Presbyteries and Councils of the Church. Further resources can be found at www.resourcingmission.org.uk.

Scotland's Census, definitions and full data are provided by National Records of Scotland (NRS) and can be explored at www.scotlandscensus.gov.uk.

SDG



To understand God's thoughts we must study statistics, for these are the measure of his purpose.

Florence Nightingale

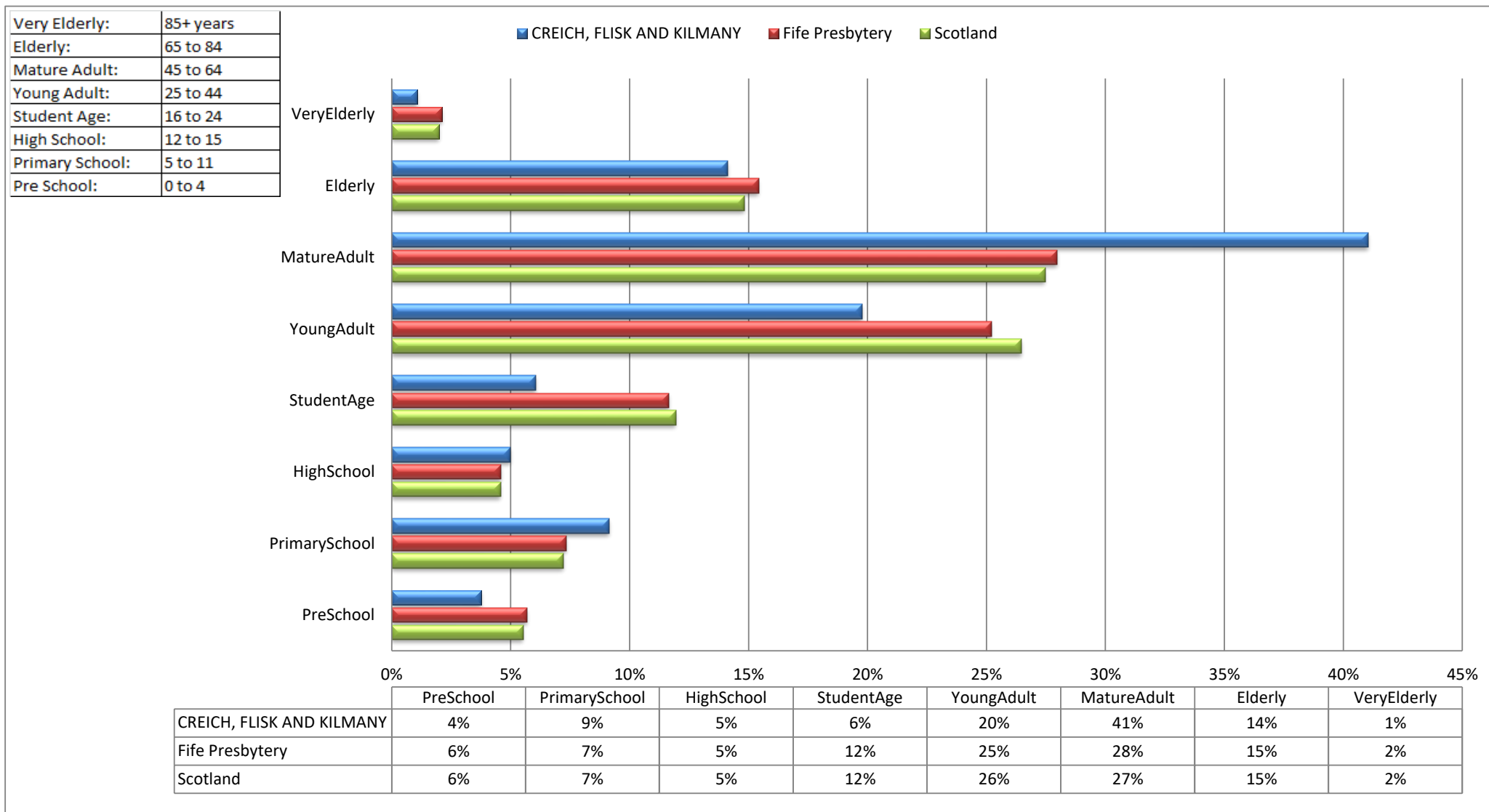
If CREICH, FLISK AND KILMANY were a village of 100 people...

- > 9 would be in primary school; 5 would be in high school
- > 20 would be aged between 25 and 44
- > 15 would be aged 65 or over
- > 77 would be of working age (16-74), including
 - 11 who have no qualifications; 38 who have a University degree
 - 25 who work full time; 13 who are retired
- > 75 would describe themselves as 'White - Scottish'
- > 3 would describe their health as bad or very bad
- > 14 would be providing unpaid care
- > **36 would say they belonged to the Church of Scotland**

If CREICH, FLISK AND KILMANY were a village of 100 households...

- > 26 households would consist of one person, 8 of whom are aged 65 and over
- > 26 would have dependent children (aged under 16, or under 18 in full-time education)
- > 30 would be in rented accommodation
- > 95 would have access to at least one car or van
- > 4 would speak a language other than English in the home

Population Breakdown by Age-group



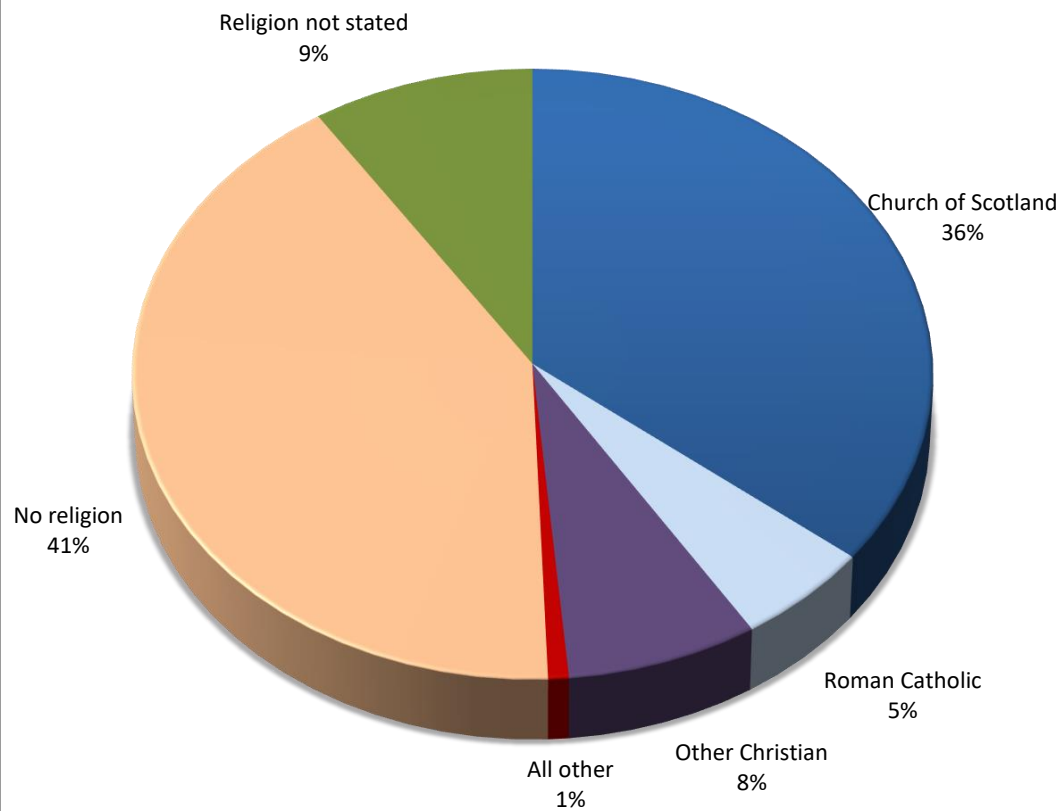
| Name | PreSchool | PrimarySchool | HighSchool | StudentAge | YoungAdult | MatureAdult | Elderly | VeryElderly | Total |
|---------------------------|-----------|---------------|------------|------------|------------|-------------|---------|-------------|-----------|
| CREICH, FLISK AND KILMANY | 28 | 68 | 37 | 45 | 147 | 305 | 105 | 8 | 743 |
| Fife Presbytery | 20,798 | 26,877 | 16,794 | 42,555 | 92,151 | 102,267 | 56,390 | 7,742 | 365,574 |
| Scotland | 292,821 | 381,453 | 242,057 | 632,488 | 1,402,081 | 1,454,169 | 784,431 | 105,903 | 5,295,403 |

Census Table:KS102SC

Population Breakdown by Religion

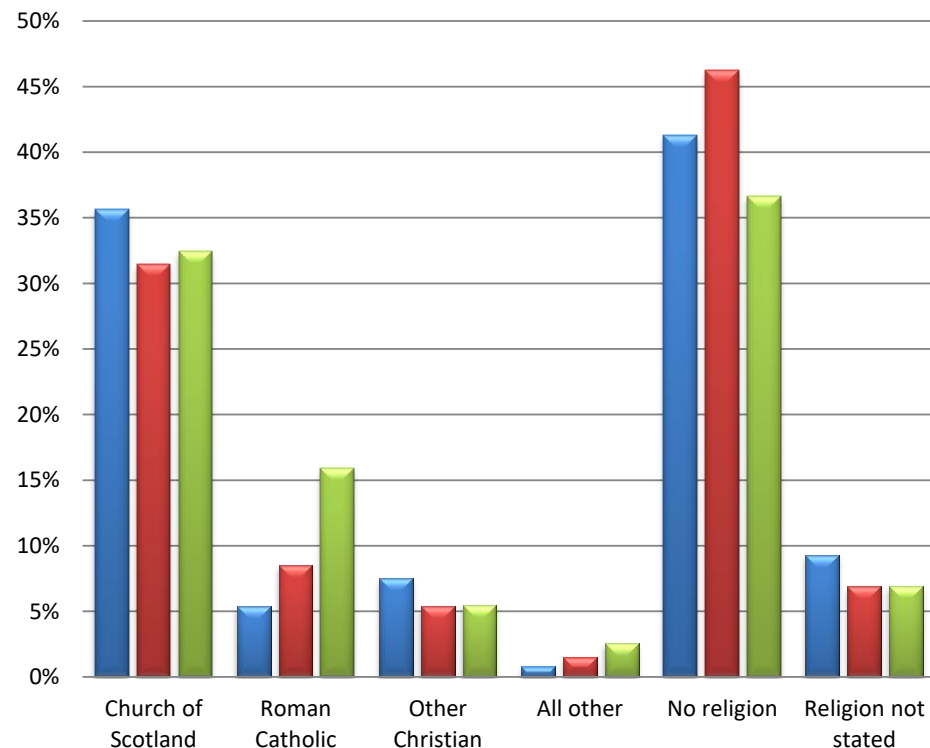
Religious affiliation within the parish

- Church of Scotland
- Roman Catholic
- Other Christian
- All other
- No religion
- Religion not stated



Religious affiliation across the country

- CREICH, FLISK AND KILMANY
- Fife Presbytery
- Scotland



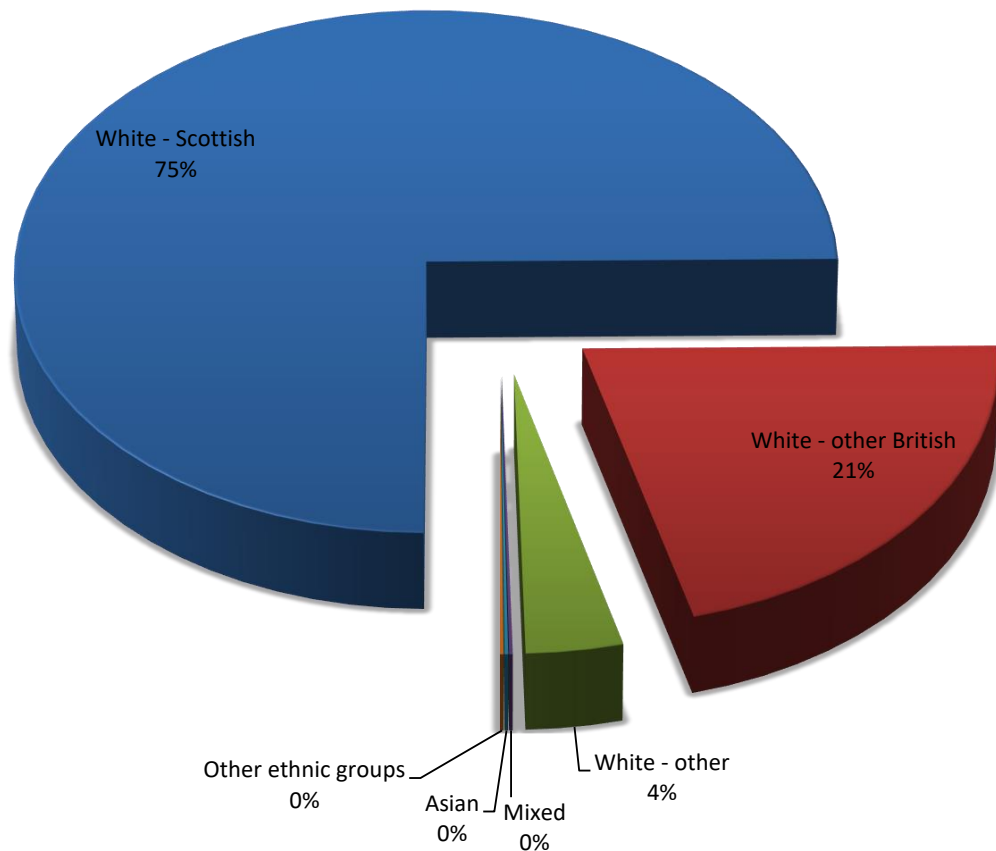
| Name | Church of Scotland | Roman Catholic | Other Christian | All Other | No religion | Not Stated | Total |
|---------------------------|--------------------|----------------|-----------------|-----------|-------------|------------|-----------|
| CREICH, FLISK AND KILMANY | 265 | 40 | 56 | 6 | 307 | 69 | 743 |
| Fife Presbytery | 114,910 | 31,117 | 19,782 | 5,580 | 169,084 | 25,101 | 365,574 |
| Scotland | 1,717,871 | 841,053 | 291,275 | 136,049 | 1,941,116 | 368,039 | 5,295,403 |

Census Table:KS209SCb

Population Breakdown by Ethnicity/Language

Ethnicity within the parish

■ White - Scottish
 ■ White - other British
 ■ White - other
 ■ Mixed
 ■ Asian
 ■ Other ethnic groups



Language Use

99% of people over 3 in the parish speak English well (99% Presbytery; 99% Scotland)

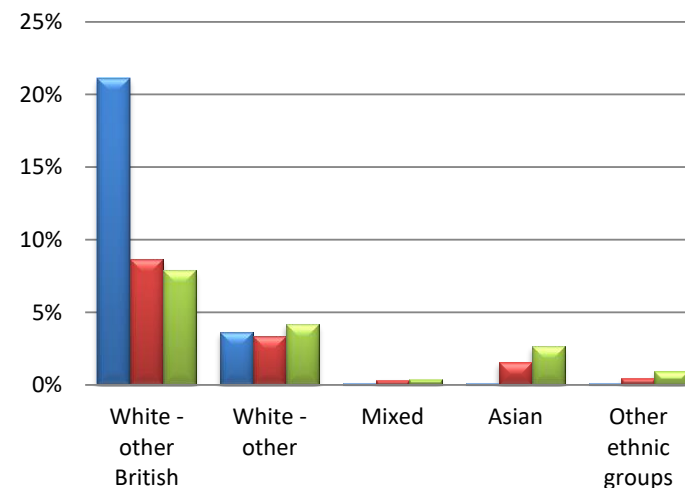
0.7% can speak Gaelic (0.4%; 1.1%)

4% of households use a language other than English in the home (5%; 7%)

Ethnicity across the country *

*Excludes White – Scottish for increased clarity

■ CREICH, FLISK AND KILMANY
 ■ Fife Presbytery
 ■ Scotland



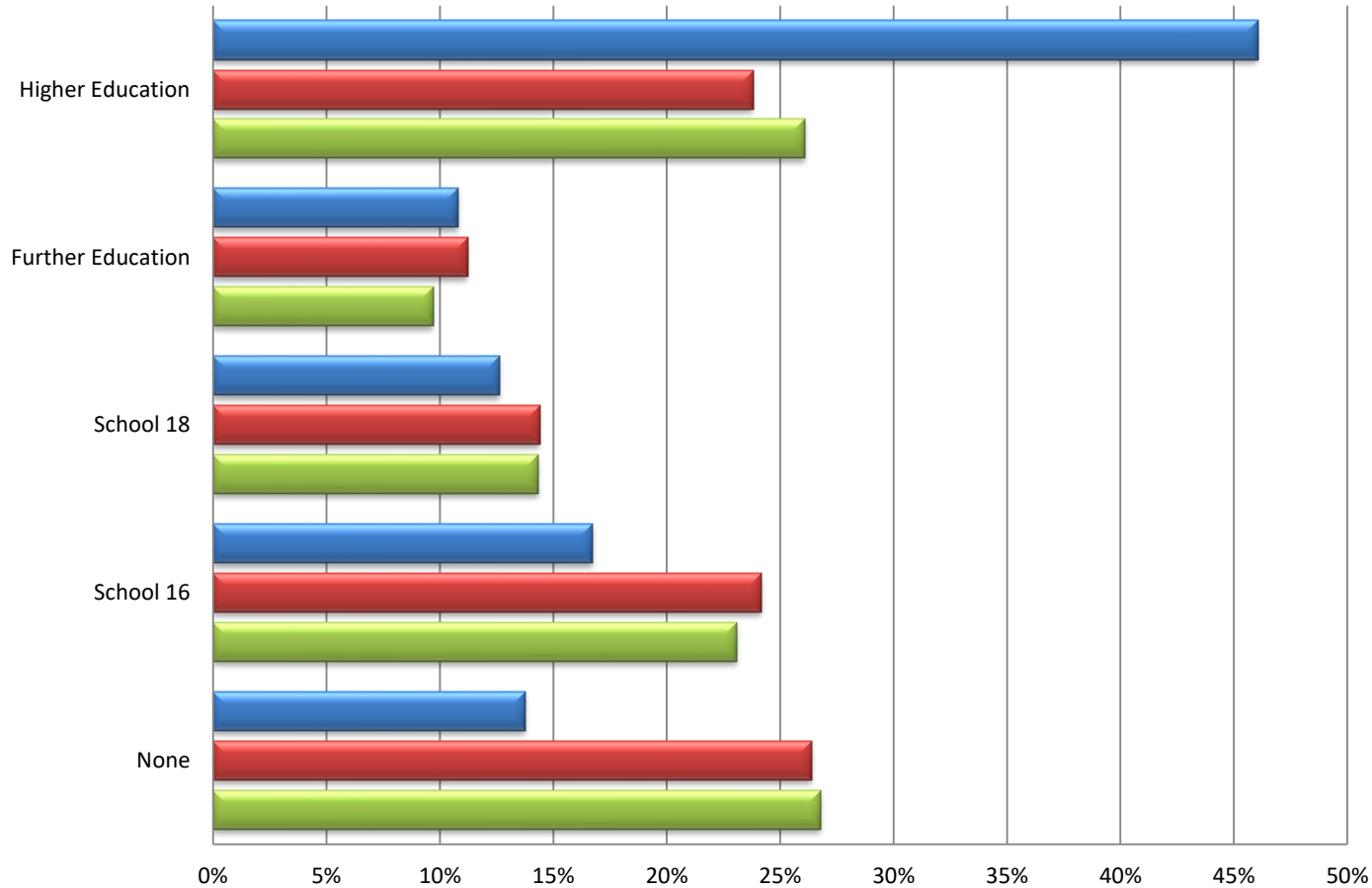
| Name | White - Scottish | White - other British | White - other | Mixed | Asian | Other ethnic groups | All people |
|---------------------------|------------------|-----------------------|---------------|--------|---------|---------------------|------------|
| CREICH, FLISK AND KILMANY | 556 | 157 | 27 | 1 | 1 | 1 | 743 |
| Fife Presbytery | 313,237 | 31,546 | 12,138 | 1,261 | 5,749 | 1,643 | 365,574 |
| Scotland | 4,445,678 | 417,109 | 221,620 | 19,815 | 140,678 | 50,503 | 5,295,403 |

Census Tables:KS2015C/KS206SC

Population Breakdown by Qualifications

Highest Educational Qualification

■ CREICH, FLISK AND KILMANY ■ Fife Presbytery ■ Scotland



Population in Full time Education 16 and over

6% of people aged 16 and over in this parish are in full time education (8% Presbytery; 8% Scotland)

Definitions

Higher Education includes Degree, Postgraduate qualifications, SVQ Level 5, Professional Qualifications or equivalent

Further Education includes HNC, HND, SVQ Level 4 or equivalent

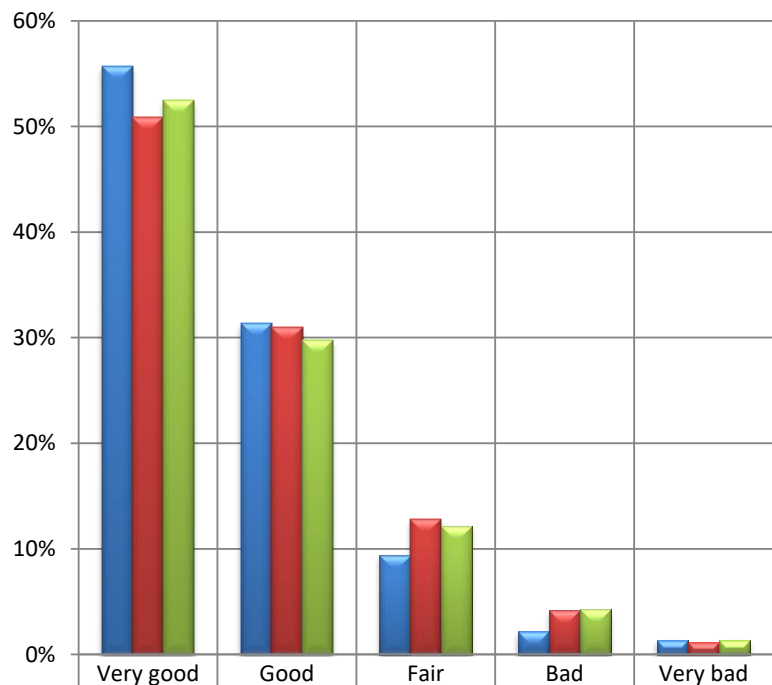
School 18 includes SCE Higher Grade, Higher, Advanced Higher, CSYS, A Level, AS Level, SVQ Level 3 or equivalent

School 16 includes O Grade, Standard Grade, Intermediate 1 or 2, GCSE, CSE, SVQ Level 1 or 2, or equivalent

| Name | None | School 16 | School 18 | Further Education | Higher Education | All people over 16 | Full Time Education 16+ |
|---------------------------|-----------|-----------|-----------|-------------------|------------------|--------------------|-------------------------|
| CREICH, FLISK AND KILMANY | 84 | 102 | 77 | 66 | 281 | 610 | 34 |
| Fife Presbytery | 79,468 | 72,791 | 43,354 | 33,798 | 71,694 | 301,105 | 24,259 |
| Scotland | 1,173,116 | 1,010,875 | 627,423 | 424,996 | 1,142,662 | 4,379,072 | 360,893 |

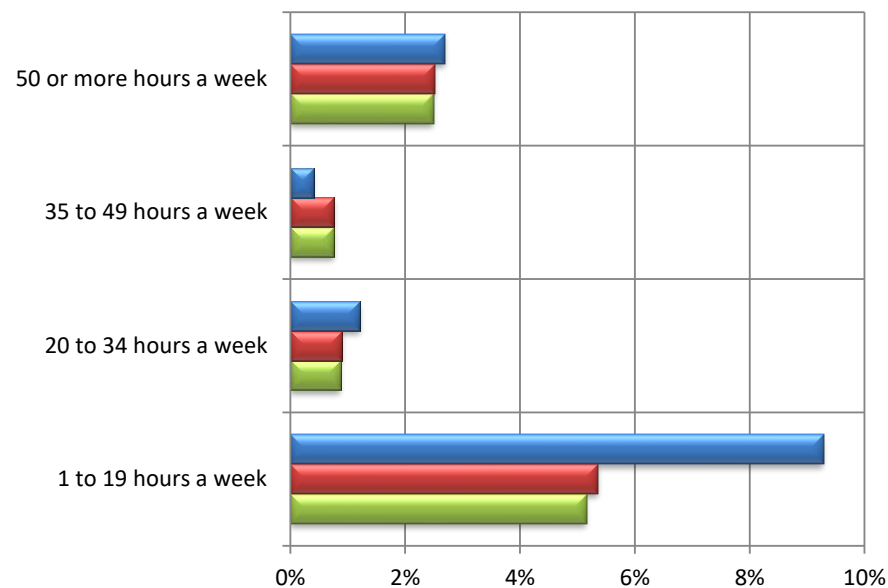
Population Breakdown by Health and Care Provision

Perceived general health



| | | | | | |
|---------------------------|-----|-----|-----|----|----|
| CREICH, FLISK AND KILMANY | 56% | 31% | 9% | 2% | 1% |
| Fife Presbytery | 51% | 31% | 13% | 4% | 1% |
| Scotland | 52% | 30% | 12% | 4% | 1% |

Provision of unpaid care



| | 1 to 19 hours a week | 20 to 34 hours a week | 35 to 49 hours a week | 50 or more hours a week |
|---------------------------|----------------------|-----------------------|-----------------------|-------------------------|
| CREICH, FLISK AND KILMANY | 9% | 1% | 0% | 3% |
| Fife Presbytery | 5% | 1% | 1% | 3% |
| Scotland | 5% | 1% | 1% | 2% |

6% of people in CREICH, FLISK AND KILMANY said that their day to day activities were limited a lot (10% Presbytery; 10% Scotland) and 11% said that their day to day activities were limited a little (11% Presbytery; 10% Scotland) by their health.

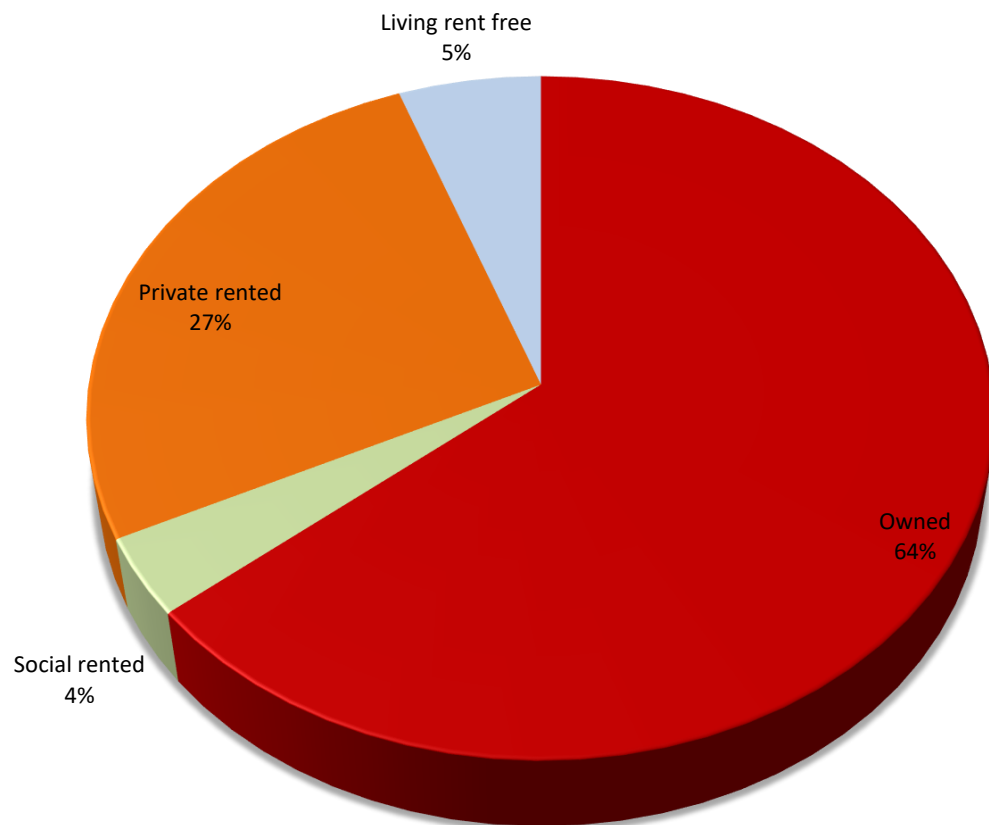
| Name | General Health | | | | | Providing Unpaid Care, hours per week | | | | |
|---------------------------|----------------|-----------|---------|---------|----------|---------------------------------------|----------|-----------|-----------|---------|
| | Very good | Good | Fair | Bad | Very bad | None | 1-19 hrs | 20-34 hrs | 35-49 hrs | 50+ hrs |
| CREICH, FLISK AND KILMANY | 414 | 233 | 70 | 16 | 10 | 642 | 69 | 9 | 3 | 20 |
| Fife Presbytery | 185,798 | 113,411 | 46,915 | 15,179 | 4,271 | 330,711 | 19,595 | 3,266 | 2,810 | 9,192 |
| Scotland | 2,778,481 | 1,575,000 | 644,881 | 226,154 | 70,887 | 4,803,172 | 273,333 | 46,315 | 40,501 | 132,082 |

Census Table:KS3015Cb

Household Breakdown by Household Tenure

Household tenure within the parish

Owned Social rented Private rented Living rent free



Household Occupation

92% of the household spaces are occupied
(95% Presbytery; 96% Scotland)

4.8% are second or holiday homes (2.3% ; 1.5%)

3.4% are vacant homes (2.5%; 2.6%)

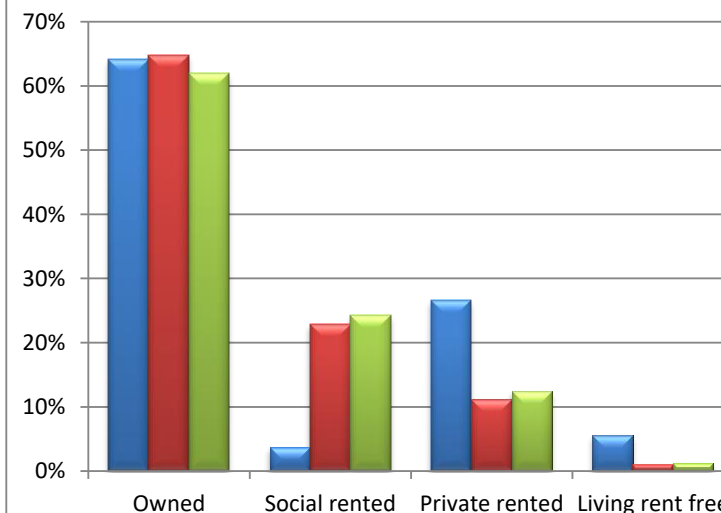
0 people in the parish live in 0 communal establishment(s)

Access to a Vehicle

95% of occupied households have access to at least one car or van (74%; 69%)

Household tenure across the country

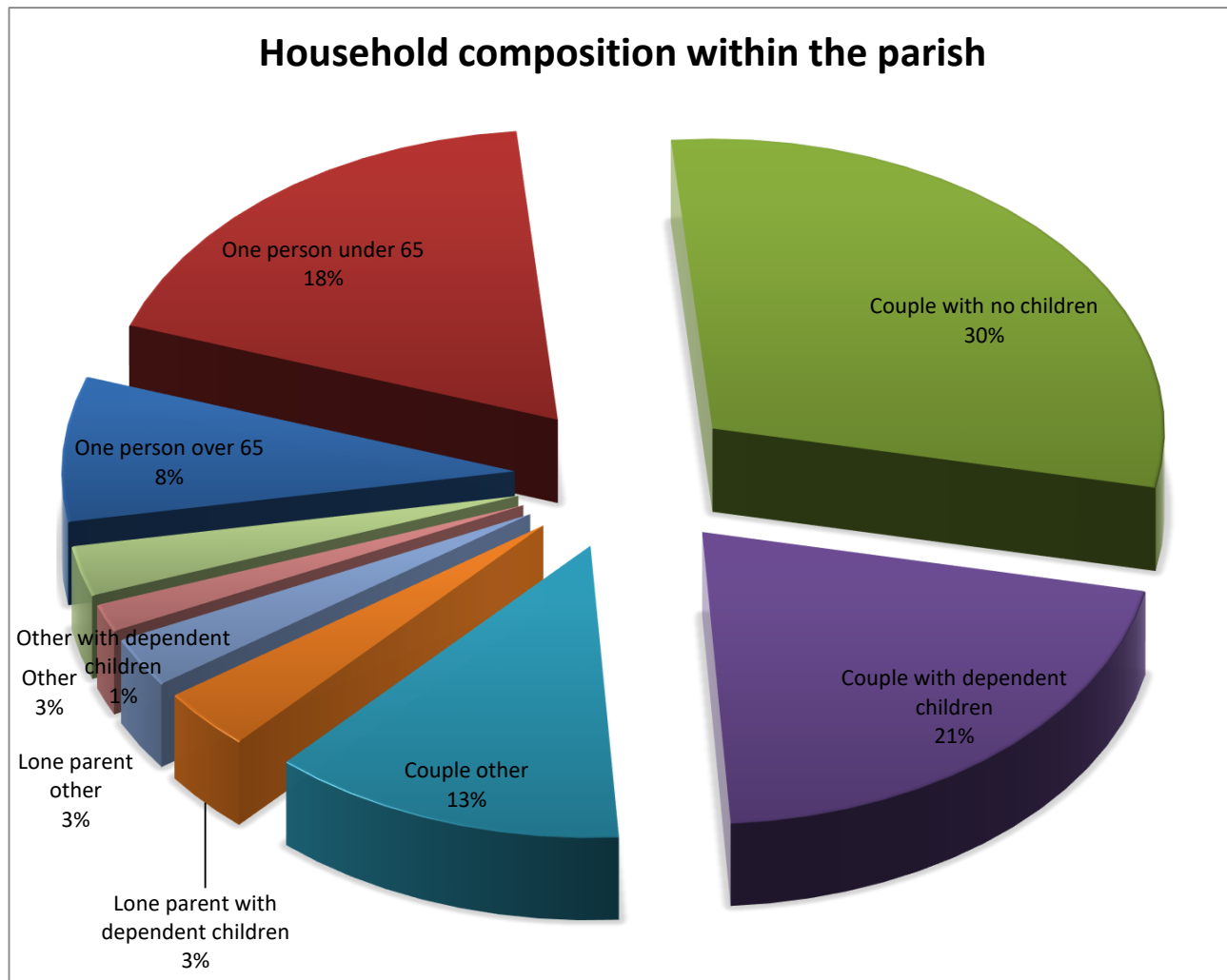
CREICH, FLISK AND KILMANY Fife Presbytery Scotland



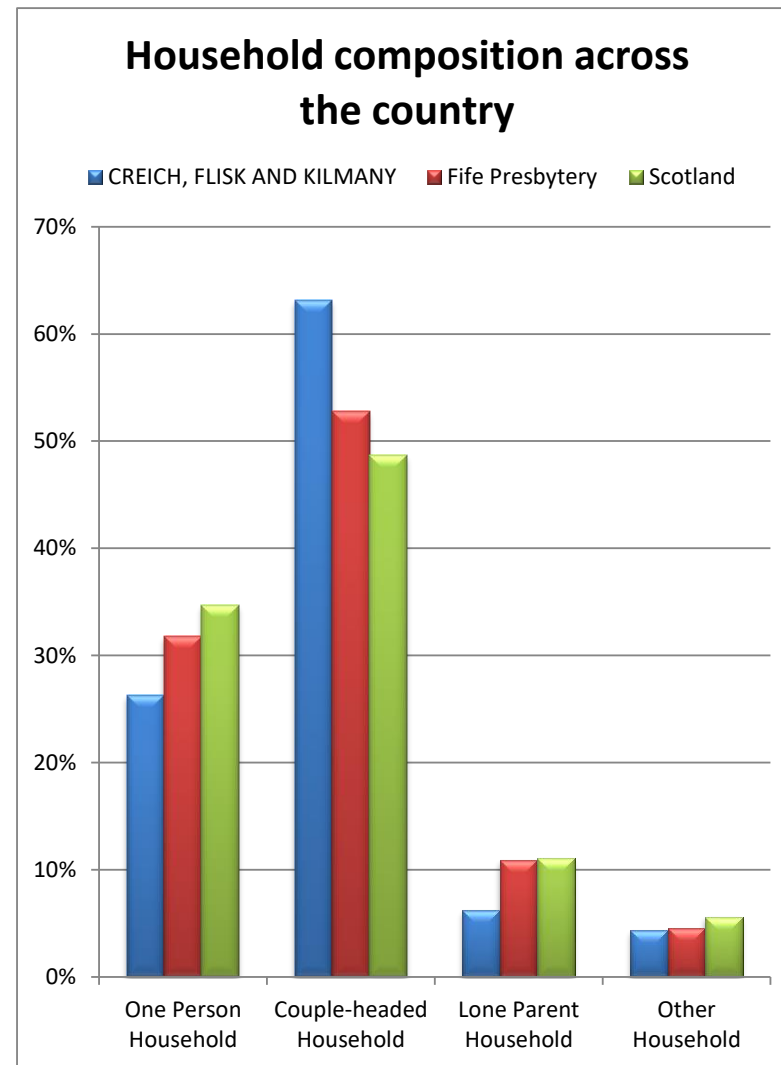
| Name | Owned | Social rented | Private rented | Rent Free | Occupied Hholds | Car/Van Access | Holiday Homes | Vacant Hholds | All Hholds |
|---------------------------|-----------|---------------|----------------|-----------|-----------------|----------------|---------------|---------------|------------------|
| CREICH, FLISK AND KILMANY | 207 | 12 | 86 | 18 | 323 | 308 | 17 | 12 | 352 |
| Fife Presbytery | 104,384 | 36,967 | 17,963 | 1,779 | 161,093 | 119,849 | 3,896 | 4,314 | 169,303 |
| Scotland | 1,470,986 | 576,419 | 294,892 | 30,480 | 2,372,777 | 1,648,633 | 36,642 | 64,462 | 2,473,881 |

Census Table:QS405SC/KS401SC/KS405SC

Household composition



For definitions of household type see www.scotlandscensus.gov.uk/en/censusresults/variables.html



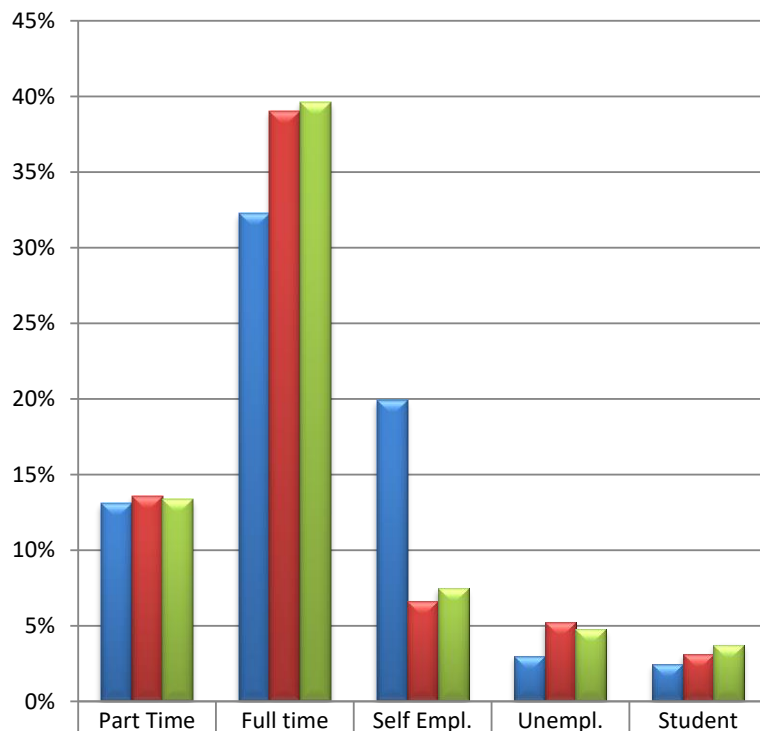
| Name | One Person Household | | Couple-headed Hhold | | Lone Parent Household | | Other Household | | All Hholds |
|---------------------------|----------------------|-------------|---------------------|---------|-----------------------|--------|-----------------|--------|------------------|
| | under 65 | 65 and over | dep't child'n | other | dep't child'n | other | dep't child'n | other | |
| CREICH, FLISK AND KILMANY | 59 | 26 | 67 | 137 | 11 | 9 | 5 | 9 | 323 |
| Fife Presbytery | 30,045 | 21,219 | 29,324 | 17,470 | 11,748 | 5,722 | 2,364 | 4,929 | 161,093 |
| Scotland | 511,447 | 311,867 | 409,533 | 263,360 | 170,002 | 93,358 | 36,954 | 94,501 | 2,372,777 |

Census Table:KS105SC

Economic activity of those of working age (1)

Economically Active

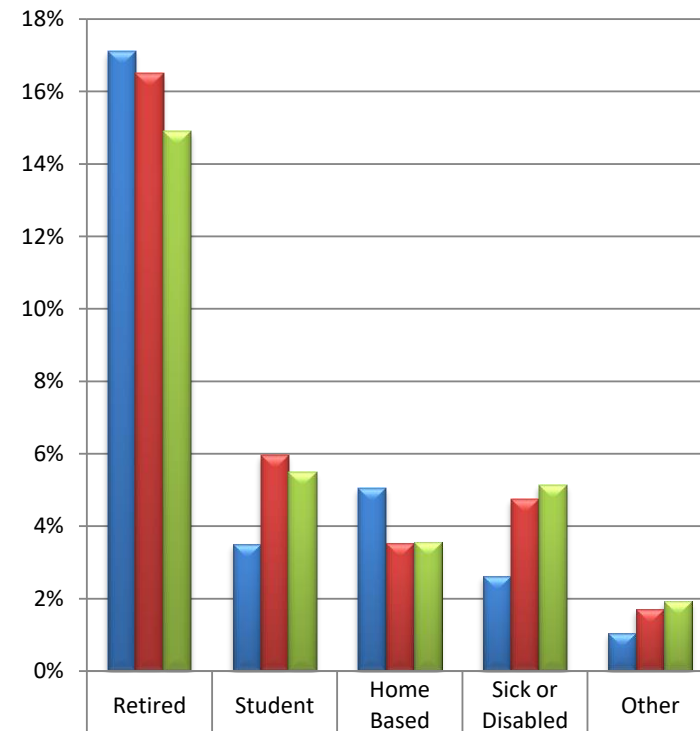
■ CREICH, FLISK AND KILMANY ■ Fife Presbytery ■ Scotland



| | Part Time | Full time | Self Empl. | Unempl. | Student |
|---------------------------|-----------|-----------|------------|---------|---------|
| CREICH, FLISK AND KILMANY | 13% | 32% | 20% | 3% | 2% |
| Fife Presbytery | 14% | 39% | 7% | 5% | 3% |
| Scotland | 13% | 40% | 7% | 5% | 4% |

Economically Inactive

■ CREICH, FLISK AND KILMANY ■ Fife Presbytery ■ Scotland



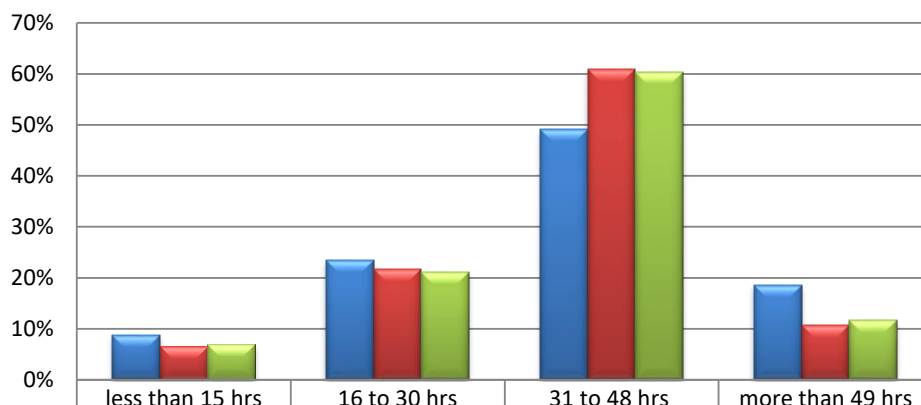
| | Retired | Student | Home Based | Sick or Disabled | Other |
|---------------------------|---------|---------|------------|------------------|-------|
| CREICH, FLISK AND KILMANY | 17% | 3% | 5% | 3% | 1% |
| Fife Presbytery | 16% | 6% | 4% | 5% | 2% |
| Scotland | 15% | 6% | 4% | 5% | 2% |

| Name | Economically Active (parish: 405, 71%) | | | | | Economically Inactive (parish: 168, 29%) | | | | | Aged 16 to 74 |
|---------------------------|--|-----------|------------|---------|---------|--|---------|------------|------------------|--------|------------------|
| | Part Time | Full time | Self Empl. | Unempl. | Student | Retired | Student | Home Based | Sick or Disabled | Other | |
| CREICH, FLISK AND KILMANY | 75 | 185 | 114 | 17 | 14 | 98 | 20 | 29 | 15 | 6 | 573 |
| Fife Presbytery | 36,915 | 106,293 | 17,976 | 14,270 | 8,510 | 44,896 | 16,192 | 9,608 | 12,908 | 4,619 | 272,187 |
| Scotland | 529,816 | 1,573,416 | 297,693 | 189,414 | 148,560 | 591,667 | 218,412 | 141,542 | 203,975 | 76,035 | 3,970,530 |

Census Table: KS601SC

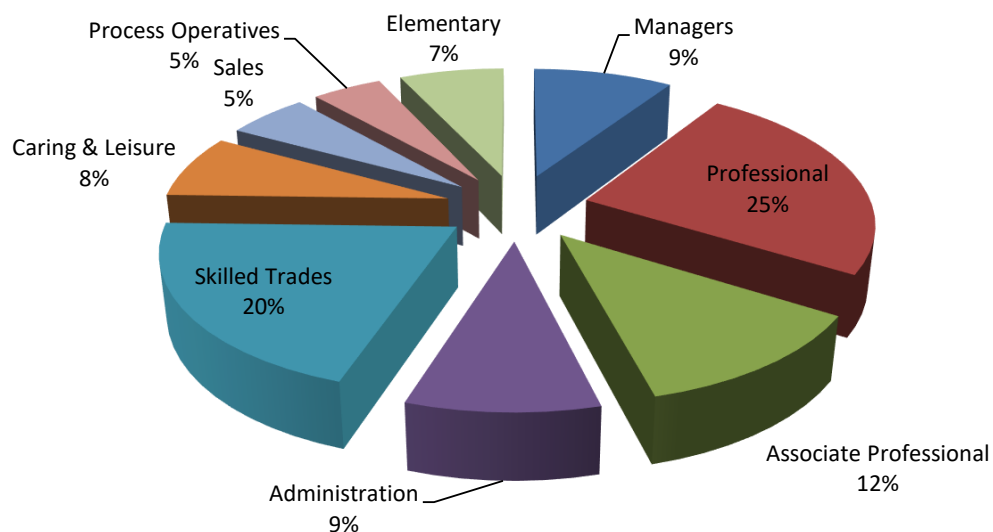
Economic activity of those of working age (2)

Number of hours worked per week



| | | | | |
|---------------------------|----|-----|-----|-----|
| CREICH, FLISK AND KILMANY | 9% | 24% | 49% | 19% |
| Fife Presbytery | 7% | 22% | 61% | 11% |
| Scotland | 7% | 21% | 60% | 12% |

Occupations within the parish



For definitions of occupations and industrial activities see www.scotlandscensus.gov.uk/en/censusresults/variables.html

Top 5 Industrial Activities:

within the parish

- 1 Human Health and Social Work Activities (16.8%)
- 2 Agriculture, forestry and fishing (14.0%)
- 3 Education (11.4%)
- 4 Wholesale and Retail Trade, Repair of Motor Vehicles and Motorcycles (8.8%)
- 5 Professional, Scientific and Technical Activities (7.8%)

within the Presbytery

- 1 Human Health and Social Work Activities (14.8%)
- 2 Wholesale and Retail Trade, Repair of Motor Vehicles and Motorcycles (14.5%)
- 3 Manufacturing (10.0%)
- 4 Education (9.0%)
- 5 Construction (8.2%)

within Scotland

- 1 Human Health and Social Work Activities (15.0%)
- 2 Wholesale and Retail Trade, Repair of Motor Vehicles and Motorcycles (15.0%)
- 3 Education (8.4%)
- 4 Construction (8.0%)
- 5 Manufacturing (7.7%)

Census Tables: KS6045Ca/KS608SC/KS605SC

What to do next

This profile has given you some information about your local community from Scotland's Census 2011. This is not an end in itself, but rather a starting place for you to explore further.

Resources to help you do this are available from the Mission and Discipleship Council at www.resourcingmission.org.uk

These include *Who is my neighbour*, training materials for making use of this profile for different purposes, and *Future Focus*, a process to examine the life of the congregation and community.

Questions to consider might include:

- > What is the profile of our congregation?
- > How does it compare to the local population?
- > What other churches are in the area? Which parts of the community do they reach? Which parts of the community are being missed?
- > What other local organisations or centres are there that might bring people into our parish? Examples might include work, public services, leisure, shops and voluntary organisations. How can we interact with these people?
- > What areas of our parish do we know well, or less well?
- > How does the local community change between weekdays and weekends?
- > How helpful is our website? Are we correctly placed on the ChurchFinder? http://cos.churchofscotland.org.uk/church_finder/

Sources of further information

Scottish Index of Multiple Deprivation
simd.scotland.gov.uk/publication-2012/

Data on income, health, education, access, crime, housing and employment deprivation.

Scottish Neighbourhood Statistics
sns.gov.uk

This site brings together a lot of data from various agencies in Scotland and includes material on health, education, poverty, unemployment, housing, population, crime and social/community issues. It is particularly useful between Census dates.

Scottish Public Health Observatory
www.scotpho.org.uk/profiles

This site holds a lot of information about health and related issues. The 2010 Health and Wellbeing Profiles are available at "Intermediate Zone" level (around 6,000 people).

Notes

All parish-level Census data is based on 2011 Census Output Areas as released by National Records of Scotland (www.nrscotland.gov.uk). An Output Area is associated with a parish if its population weighted centroid falls within the parish boundary.

Any errors or omissions in Church of Scotland parish boundaries should be reported to the relevant Presbytery Clerk for onward transmission to Ministries Council.

Any errors or omissions in the ChurchFinder details should be notified to itdept@cofscotland.org.uk

19/06/2023