

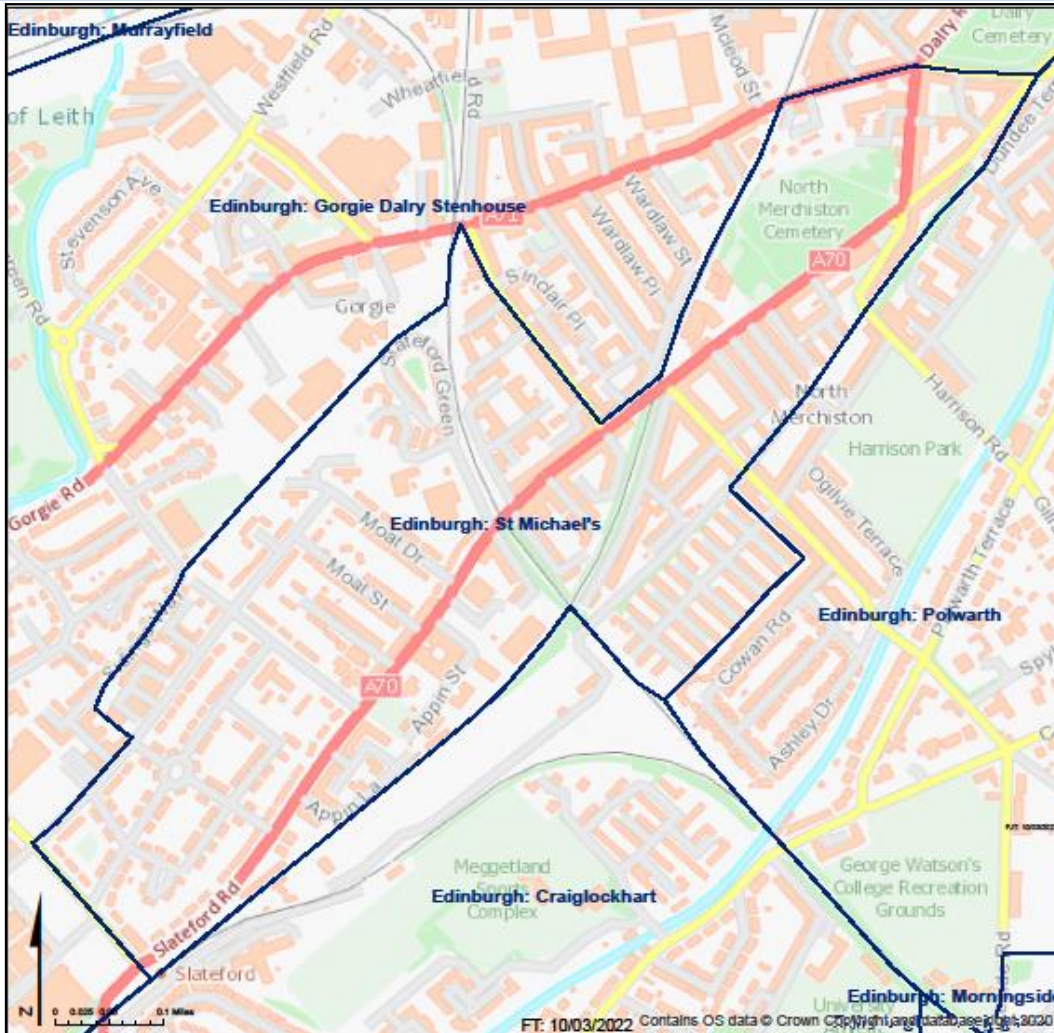


# The Church of Scotland

**Parish: EDINBURGH ST MICHAEL'S**

**Presbytery** Edinburgh and West Lothian

**Parish** EDINBURGH ST MICHAEL'S



This profile of selected Census data has been prepared by the Statistics for Mission Group of the Church of Scotland for use by Congregations, Presbyteries and Councils of the Church. Further resources can be found at [www.resourcingmission.org.uk](http://www.resourcingmission.org.uk).

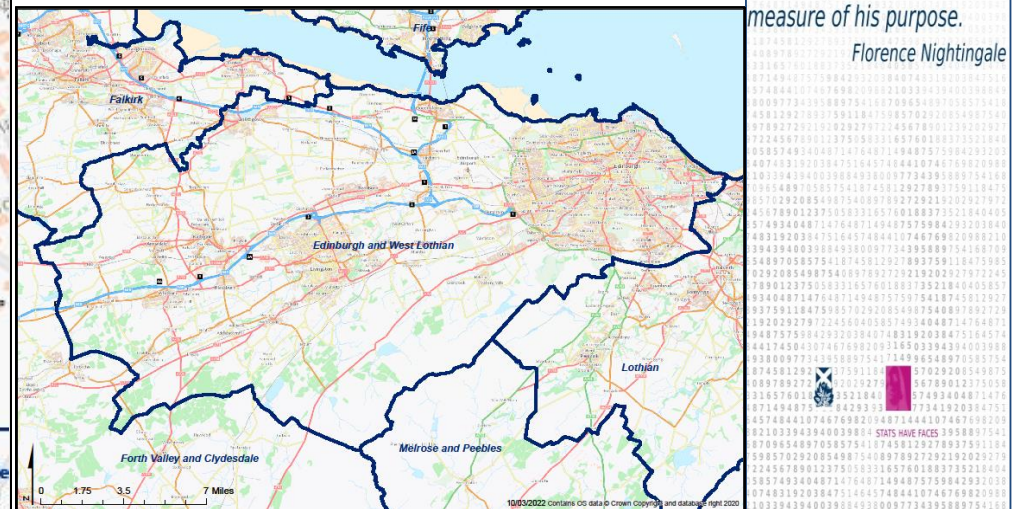
Scotland's Census, definitions and full data are provided by National Records of Scotland (NRS) and can be explored at [www.scotlandscensus.gov.uk](http://www.scotlandscensus.gov.uk).

SDG

**STATISTICS FOR MISSION**

*To understand God's thoughts we must study statistics, for these are the measure of his purpose.*

*Florence Nightingale*



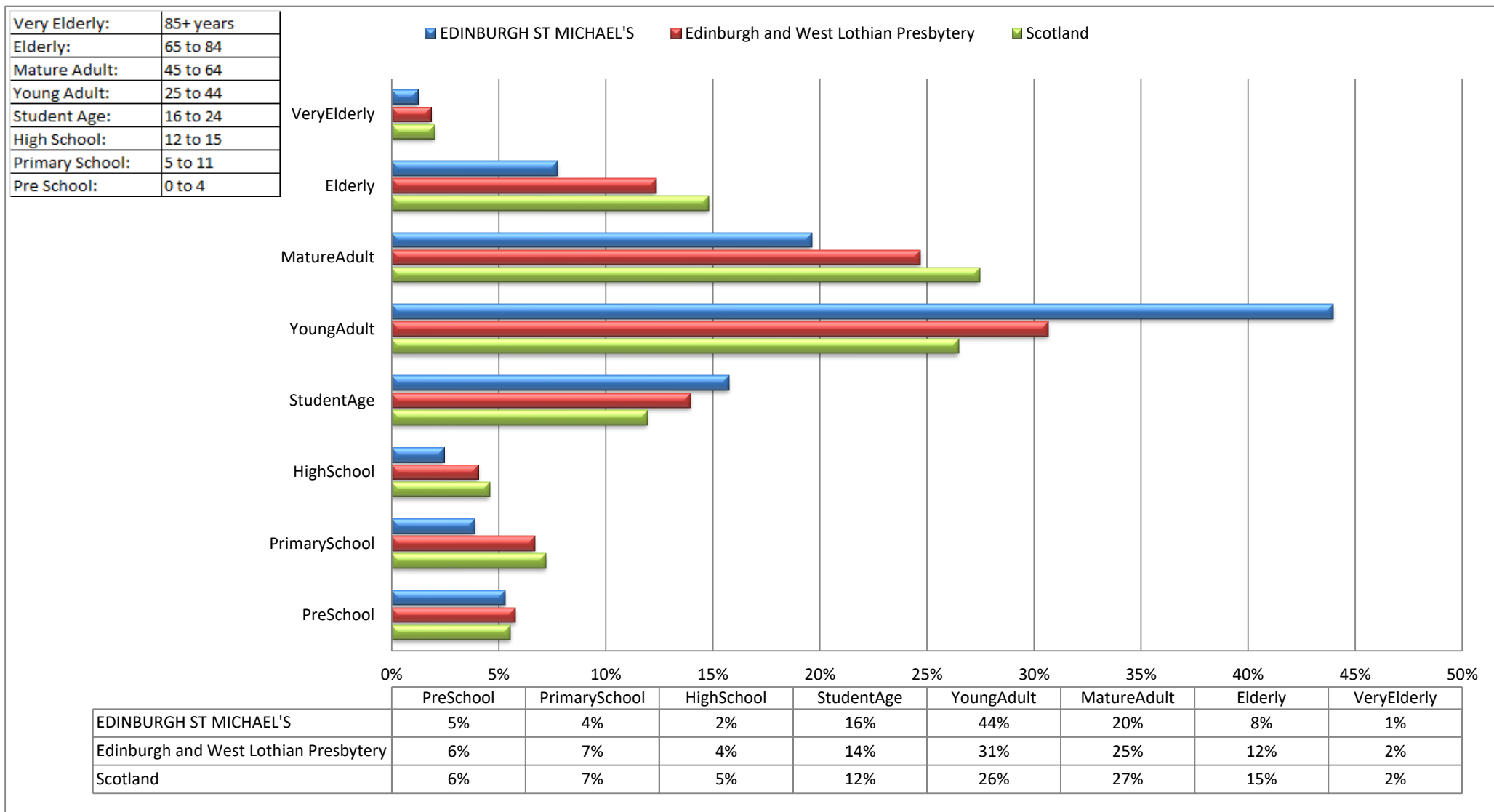
## If EDINBURGH ST MICHAEL'S were a village of 100 people...

- > 4 would be in primary school; 2 would be in high school
- > 44 would be aged between 25 and 44
- > 9 would be aged 65 or over
- > 84 would be of working age (16-74), including
  - 12 who have no qualifications; 43 who have a University degree
  - 43 who work full time; 6 who are retired
- > 67 would describe themselves as 'White - Scottish'
- > 3 would describe their health as bad or very bad
- > 7 would be providing unpaid care
- > **20 would say they belonged to the Church of Scotland**

## If EDINBURGH ST MICHAEL'S were a village of 100 households...

- > 44 households would consist of one person, 8 of whom are aged 65 and over
- > 16 would have have dependent children (aged under 16, or under 18 in full-time education)
- > 39 would be in rented accomodation
- > 55 would have access to at least one car or van
- > 17 would speak a language other than English in the home

## Population Breakdown by Age-group

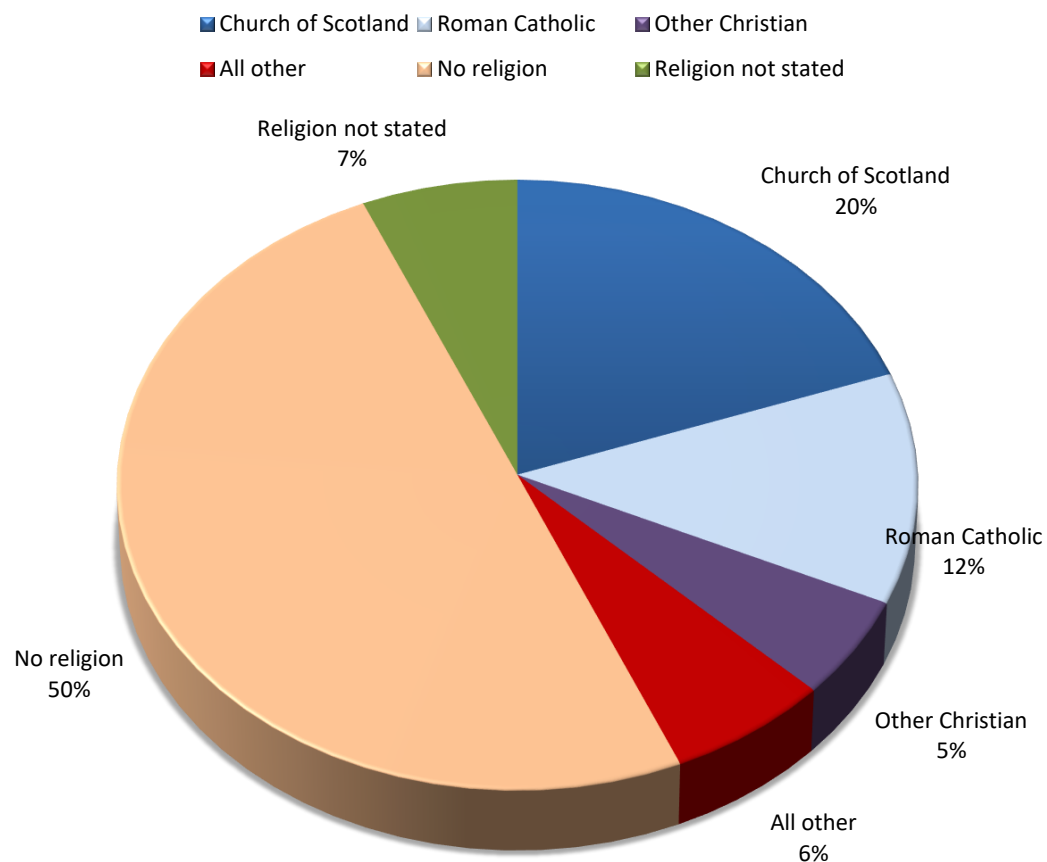


| Name                                  | PreSchool | PrimarySchool | HighSchool | StudentAge | YoungAdult | MatureAdult | Elderly | VeryElderly | Total     |
|---------------------------------------|-----------|---------------|------------|------------|------------|-------------|---------|-------------|-----------|
| EDINBURGH ST MICHAEL'S                | 364       | 266           | 167        | 1,081      | 3,014      | 1,344       | 531     | 85          | 6,852     |
| Edinburgh and West Lothian Presbytery | 37,922    | 43,753        | 26,587     | 91,372     | 200,817    | 161,665     | 80,859  | 12,054      | 655,029   |
| Scotland                              | 292,821   | 381,453       | 242,057    | 632,488    | 1,402,081  | 1,454,169   | 784,431 | 105,903     | 5,295,403 |

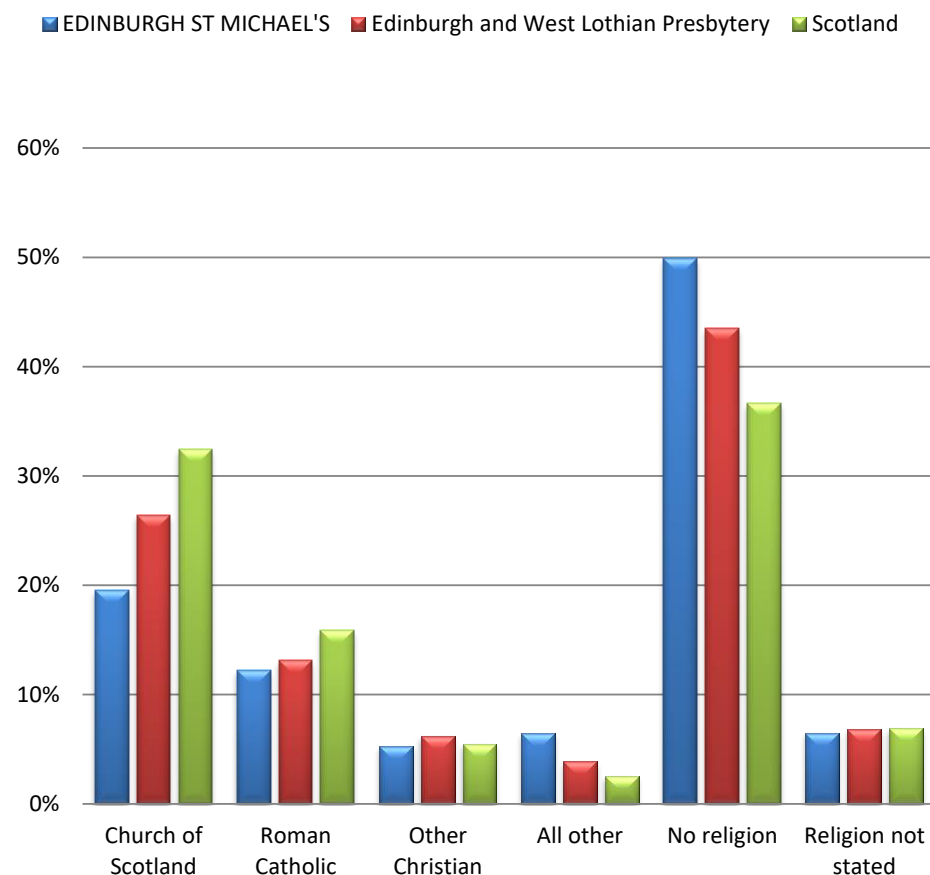
Census Table:KS102SC

# Population Breakdown by Religion

## Religious affiliation within the parish



## Religious affiliation across the country



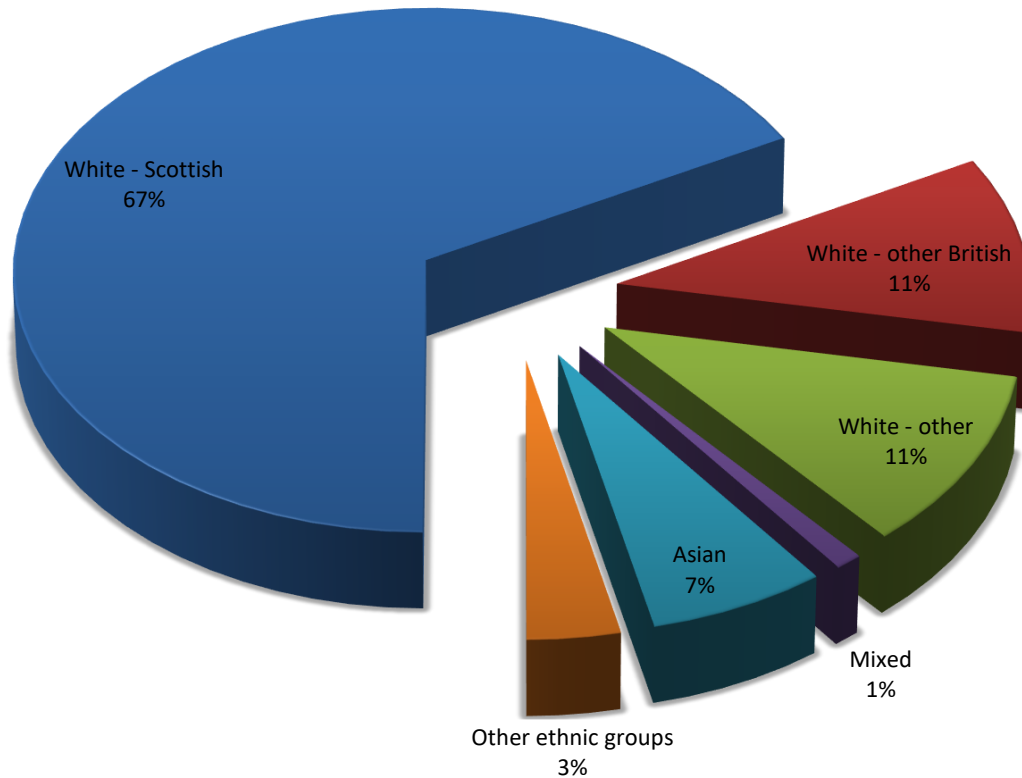
| Name                                  | Church of Scotland | Roman Catholic | Other Christian | All Other | No religion | Not Stated | Total     |
|---------------------------------------|--------------------|----------------|-----------------|-----------|-------------|------------|-----------|
| EDINBURGH ST MICHAEL'S                | 1,341              | 839            | 364             | 440       | 3,422       | 446        | 6,852     |
| Edinburgh and West Lothian Presbytery | 172,925            | 86,266         | 40,706          | 25,597    | 284,953     | 44,582     | 655,029   |
| Scotland                              | 1,717,871          | 841,053        | 291,275         | 136,049   | 1,941,116   | 368,039    | 5,295,403 |

Census Table:KS209SCb

## Population Breakdown by Ethnicity/Language

### Ethnicity within the parish

■ White - Scottish  
 ■ White - other British  
 ■ White - other  
 ■ Mixed  
 ■ Asian  
 ■ Other ethnic groups



### Language Use

97% of people over 3 in the parish speak English well (98% Presbytery; 99% Scotland)

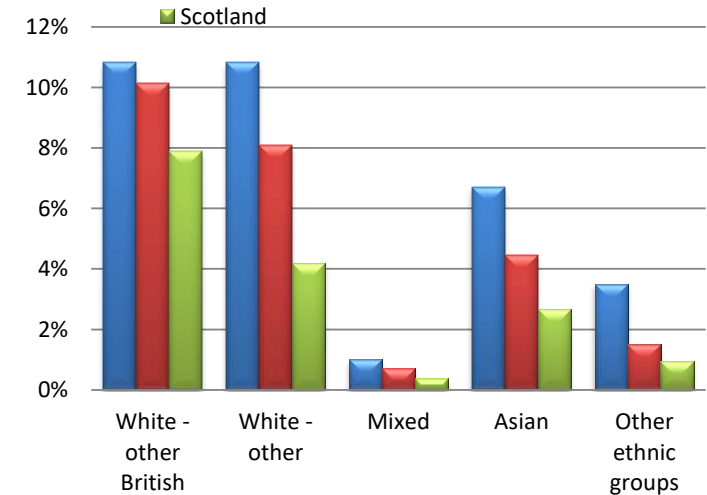
0.6% can speak Gaelic (0.6%; 1.1%)

17% of households use a language other than English in the home (11%; 7%)

### Ethnicity across the country \*

\*Excludes White – Scottish for increased clarity

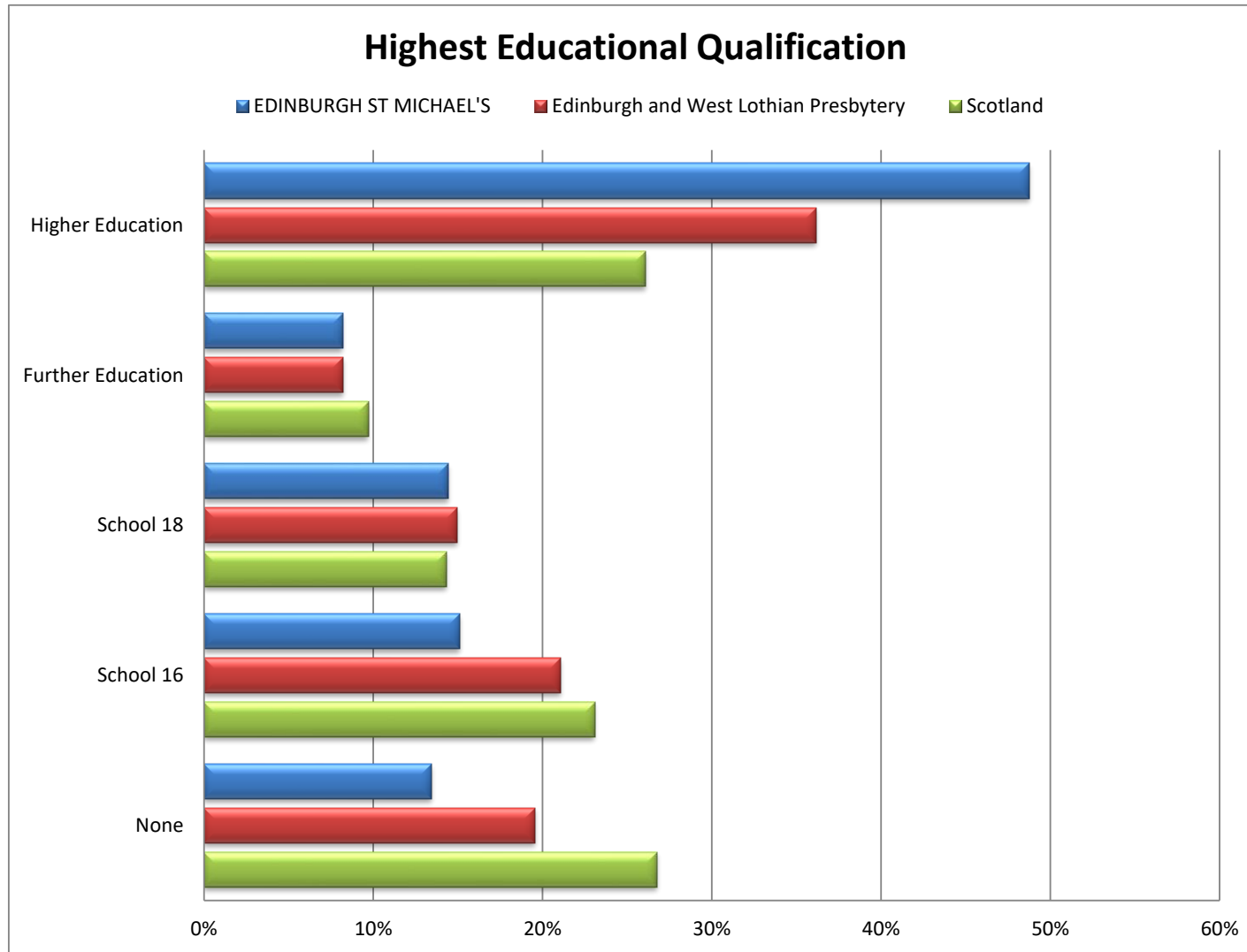
■ EDINBURGH ST MICHAEL'S  
■ Edinburgh and West Lothian Presbytery  
■ Scotland



| Name                                  | White - Scottish | White - other British | White - other | Mixed  | Asian   | Other ethnic groups | All people |
|---------------------------------------|------------------|-----------------------|---------------|--------|---------|---------------------|------------|
| EDINBURGH ST MICHAEL'S                | 4,599            | 742                   | 743           | 70     | 458     | 240                 | 6,852      |
| Edinburgh and West Lothian Presbytery | 491,871          | 66,462                | 52,928        | 4,625  | 29,239  | 9,904               | 655,029    |
| Scotland                              | 4,445,678        | 417,109               | 221,620       | 19,815 | 140,678 | 50,503              | 5,295,403  |

Census Tables:KS2015C/KS206SC

## Population Breakdown by Qualifications



### Population in Full time Education 16 and over

15% of people aged 16 and over in this parish are in full time education (12% Presbytery; 8% Scotland)

### Definitions

**Higher Education** includes Degree, Postgraduate qualifications, SVQ Level 5, Professional Qualifications or equivalent

**Further Education** includes HNC, HND, SVQ Level 4 or equivalent

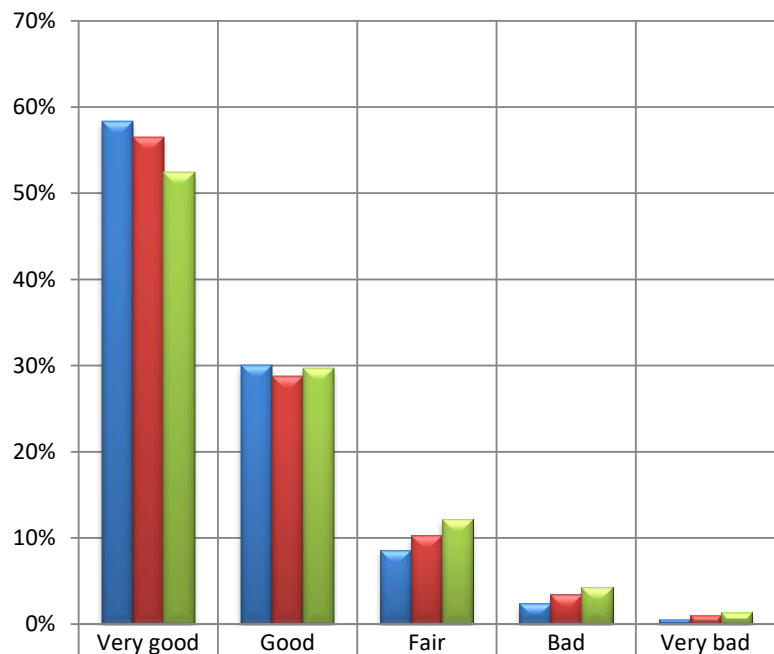
**School 18** includes SCE Higher Grade, Higher, Advanced Higher, CSYS, A Level, AS Level, SVQ Level 3 or equivalent

**School 16** includes O Grade, Standard Grade, Intermediate 1 or 2, GCSE, CSE, SVQ Level 1 or 2, or equivalent

| Name                                  | None      | School 16 | School 18 | Further Education | Higher Education | All people over 16 | Full Time Education 16+ |
|---------------------------------------|-----------|-----------|-----------|-------------------|------------------|--------------------|-------------------------|
| EDINBURGH ST MICHAEL'S                | 814       | 916       | 875       | 496               | 2,954            | 6,055              | 917                     |
| Edinburgh and West Lothian Presbytery | 107,014   | 115,246   | 81,762    | 44,893            | 197,852          | 546,767            | 65,769                  |
| Scotland                              | 1,173,116 | 1,010,875 | 627,423   | 424,996           | 1,142,662        | 4,379,072          | 360,893                 |

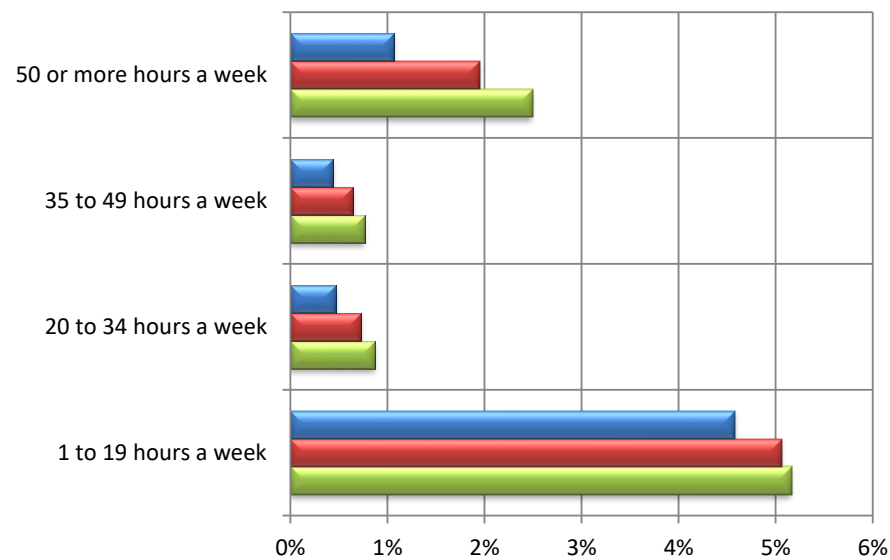
## Population Breakdown by Health and Care Provision

### Perceived general health



|                                       | Very good | Good | Fair | Bad | Very bad |
|---------------------------------------|-----------|------|------|-----|----------|
| EDINBURGH ST MICHAEL'S                | 58%       | 30%  | 9%   | 2%  | 1%       |
| Edinburgh and West Lothian Presbytery | 56%       | 29%  | 10%  | 3%  | 1%       |
| Scotland                              | 52%       | 30%  | 12%  | 4%  | 1%       |

### Provision of unpaid care



|                                       | 1 to 19 hours a week | 20 to 34 hours a week | 35 to 49 hours a week | 50 or more hours a week |
|---------------------------------------|----------------------|-----------------------|-----------------------|-------------------------|
| EDINBURGH ST MICHAEL'S                | 5%                   | 0%                    | 0%                    | 1%                      |
| Edinburgh and West Lothian Presbytery | 5%                   | 1%                    | 1%                    | 2%                      |
| Scotland                              | 5%                   | 1%                    | 1%                    | 2%                      |

5% of people in EDINBURGH ST MICHAEL'S said that their day to day activities were limited a lot (8% Presbytery; 10% Scotland) and 8% said that their day to day activities were limited a little (9% Presbytery; 10% Scotland) by their health.

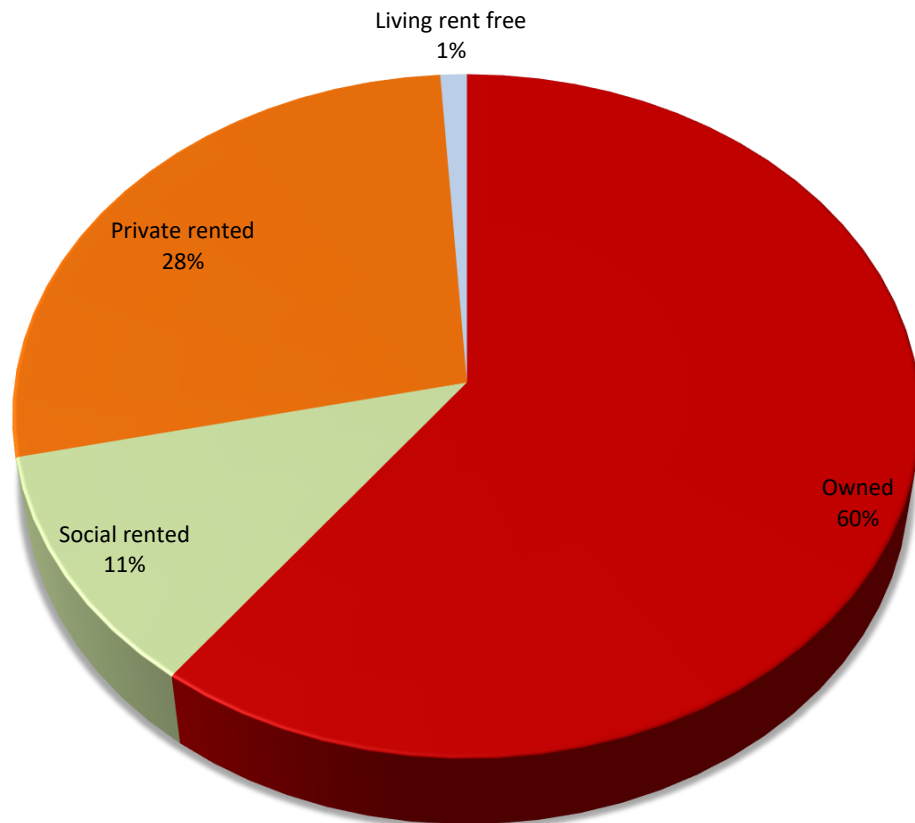
| Name                                  | General Health |           |         |         |          | Providing Unpaid Care, hours per week |          |           |           |         |
|---------------------------------------|----------------|-----------|---------|---------|----------|---------------------------------------|----------|-----------|-----------|---------|
|                                       | Very good      | Good      | Fair    | Bad     | Very bad | None                                  | 1-19 hrs | 20-34 hrs | 35-49 hrs | 50+ hrs |
| EDINBURGH ST MICHAEL'S                | 3,999          | 2,056     | 586     | 168     | 43       | 6,403                                 | 314      | 32        | 30        | 73      |
| Edinburgh and West Lothian Presbytery | 370,016        | 188,374   | 67,499  | 22,295  | 6,845    | 600,143                               | 33,157   | 4,753     | 4,214     | 12,762  |
| Scotland                              | 2,778,481      | 1,575,000 | 644,881 | 226,154 | 70,887   | 4,803,172                             | 273,333  | 46,315    | 40,501    | 132,082 |

Census Table:KS301SCb

## Household Breakdown by Household Tenure

### Household tenure within the parish

Owned Social rented Private rented Living rent free



### Household Occupation

98% of the household spaces are occupied (97% Presbytery; 96% Scotland)

0.2% are second or holiday homes (0.7% ; 1.5%)

2.2% are vacant homes (2.1%; 2.6%)

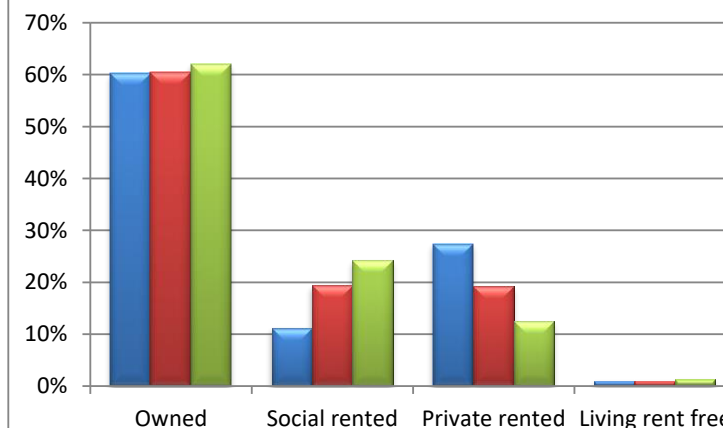
18 people in the parish live in 6 communal establishment(s)

### Access to a Vehicle

55% of occupied households have access to at least one car or van (64%; 69%)

### Household tenure across the country

EDINBURGH ST MICHAEL'S  
Edinburgh and West Lothian Presbytery  
Scotland

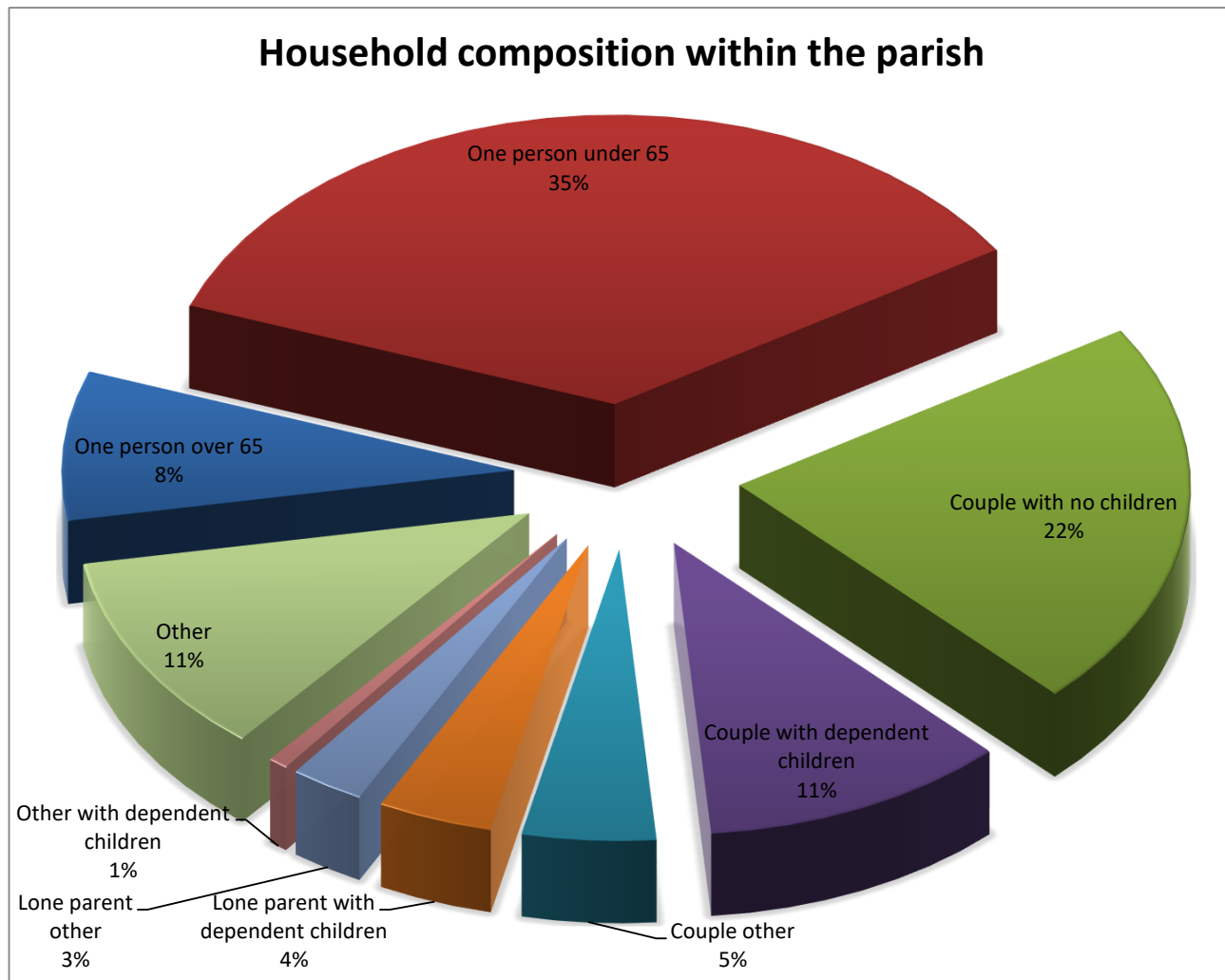


| Name                                  | Owned     | Social rented | Private rented | Rent Free | Occupied Hholds | Car/Van Access | Holiday Homes | Vacant Hholds | All Hholds       |
|---------------------------------------|-----------|---------------|----------------|-----------|-----------------|----------------|---------------|---------------|------------------|
| EDINBURGH ST MICHAEL'S                | 2,213     | 413           | 1,007          | 38        | 3,671           | 2,036          | 9             | 83            | <b>3,763</b>     |
| Edinburgh and West Lothian Presbytery | 180,019   | 57,832        | 57,050         | 3,034     | 297,935         | 190,611        | 2,224         | 6,449         | <b>306,608</b>   |
| Scotland                              | 1,470,986 | 576,419       | 294,892        | 30,480    | 2,372,777       | 1,648,633      | 36,642        | 64,462        | <b>2,473,881</b> |

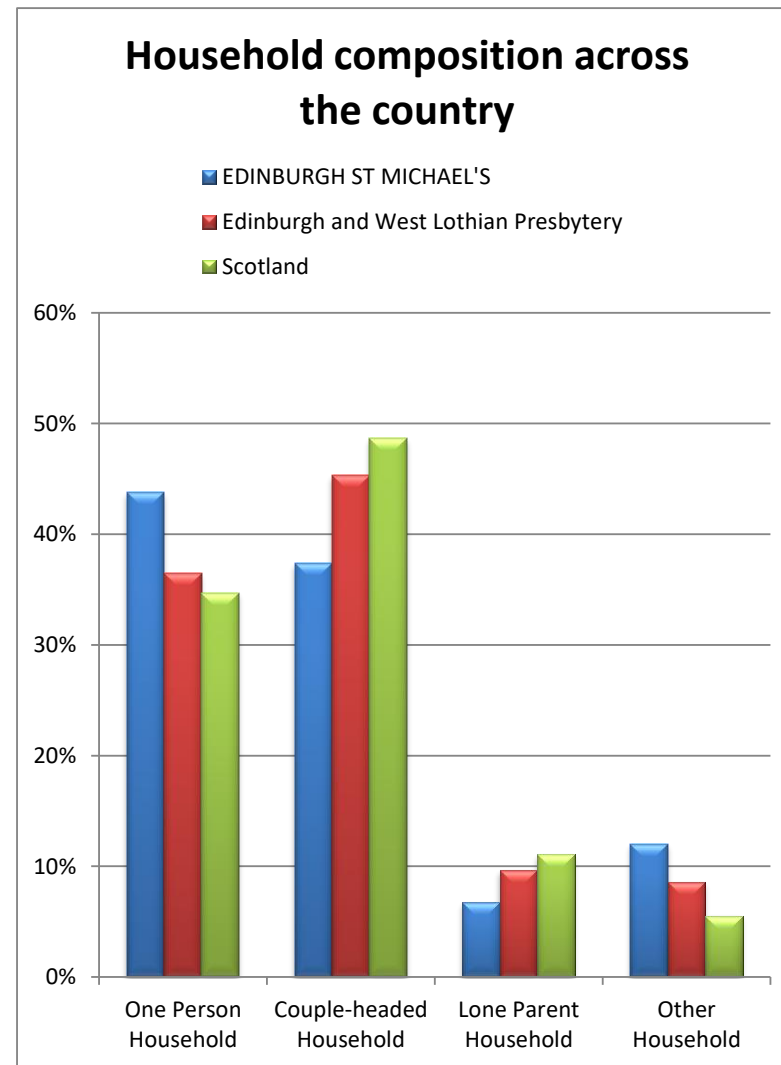
Census Table:QS405SC/KS401SC/KS405SC



## Household composition



For definitions of household type see [www.scotlandscensus.gov.uk/en/censusresults/variables.html](http://www.scotlandscensus.gov.uk/en/censusresults/variables.html)



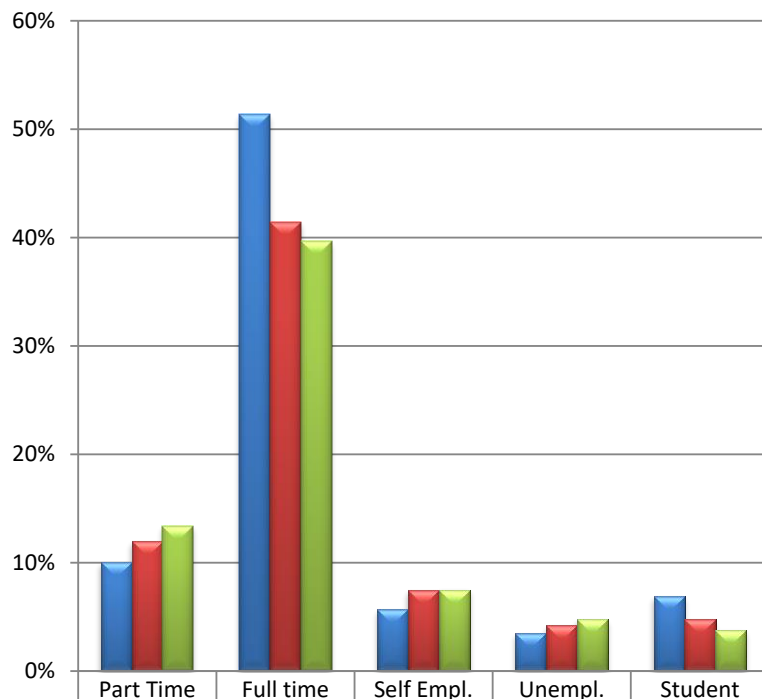
| Name                                  | One Person Household |             | Couple-headed Hhold |         | Lone Parent Household |        | Other Household |        | All Hholds       |
|---------------------------------------|----------------------|-------------|---------------------|---------|-----------------------|--------|-----------------|--------|------------------|
|                                       | under 65             | 65 and over | dep't child'n       | other   | dep't child'n         | other  | dep't child'n   | other  |                  |
| EDINBURGH ST MICHAEL'S                | 1,304                | 305         | 403                 | 970     | 151                   | 97     | 26              | 415    | <b>3,671</b>     |
| Edinburgh and West Lothian Presbytery | 74,179               | 34,404      | 48,348              | 28,804  | 19,460                | 9,344  | 4,218           | 21,389 | <b>297,935</b>   |
| Scotland                              | 511,447              | 311,867     | 409,533             | 263,360 | 170,002               | 93,358 | 36,954          | 94,501 | <b>2,372,777</b> |

Census Table:KS105SC

## Economic activity of those of working age (1)

### Economically Active

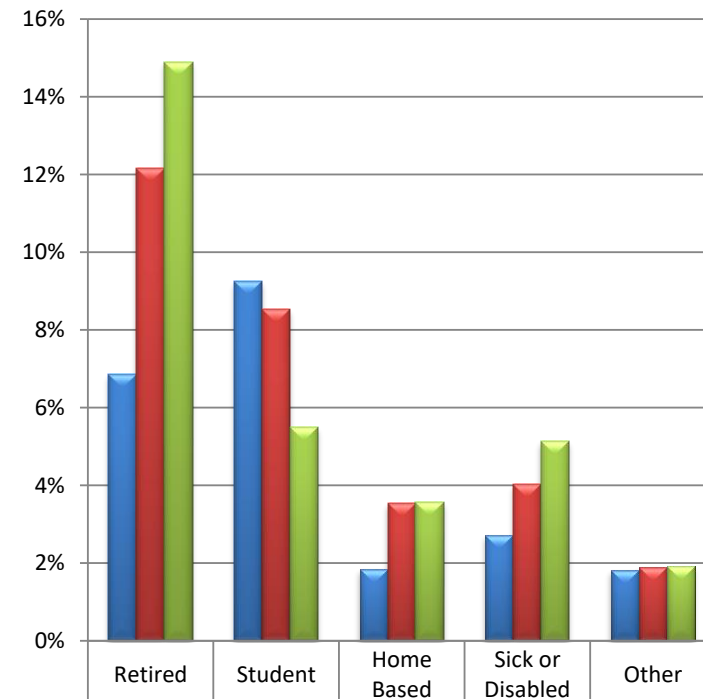
■ EDINBURGH ST MICHAEL'S ■ Edinburgh and West Lothian Presbytery ■ Scotland



|                                       | Part Time | Full time | Self Empl. | Unempl. | Student |
|---------------------------------------|-----------|-----------|------------|---------|---------|
| EDINBURGH ST MICHAEL'S                | 10%       | 51%       | 6%         | 4%      | 7%      |
| Edinburgh and West Lothian Presbytery | 12%       | 41%       | 7%         | 4%      | 5%      |
| Scotland                              | 13%       | 40%       | 7%         | 5%      | 4%      |

### Economically Inactive

■ EDINBURGH ST MICHAEL'S ■ Edinburgh and West Lothian Presbytery ■ Scotland



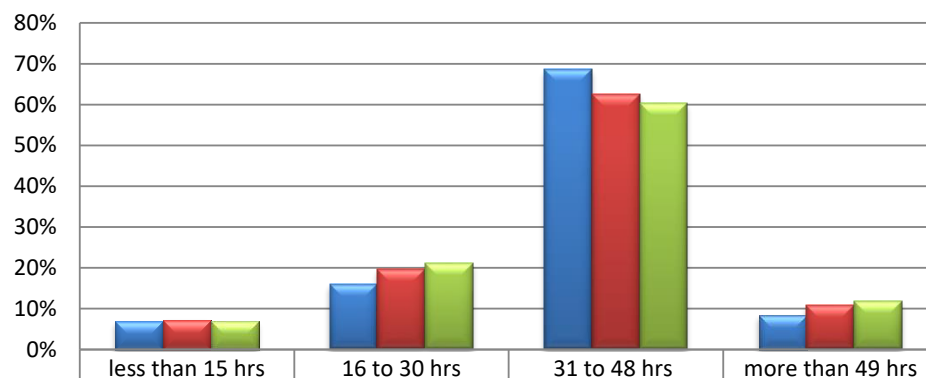
|                                       | Retired | Student | Home Based | Sick or Disabled | Other |
|---------------------------------------|---------|---------|------------|------------------|-------|
| EDINBURGH ST MICHAEL'S                | 7%      | 9%      | 2%         | 3%               | 2%    |
| Edinburgh and West Lothian Presbytery | 12%     | 9%      | 4%         | 4%               | 2%    |
| Scotland                              | 15%     | 6%      | 4%         | 5%               | 2%    |

| Name                                  | Economically Active (parish: 4466, 78%) |           |            |         |         | Economically Inactive (parish: 1296, 22%) |         |            |                  |        | Aged 16 to 74    |
|---------------------------------------|---|-----------|------------|---------|---------|---|---------|------------|------------------|--------|------------------|
|                                       | Part Time                               | Full time | Self Empl. | Unempl. | Student | Retired                                   | Student | Home Based | Sick or Disabled | Other  |                  |
| EDINBURGH ST MICHAEL'S                | 578                                     | 2,960     | 327        | 202     | 399     | 396                                       | 533     | 106        | 157              | 104    | <b>5,762</b>     |
| Edinburgh and West Lothian Presbytery | 60,171                                  | 208,323   | 37,445     | 21,160  | 23,954  | 61,161                                    | 42,876  | 17,740     | 20,258           | 9,514  | <b>502,602</b>   |
| Scotland                              | 529,816                                 | 1,573,416 | 297,693    | 189,414 | 148,560 | 591,667                                   | 218,412 | 141,542    | 203,975          | 76,035 | <b>3,970,530</b> |

Census Table: KS601SC

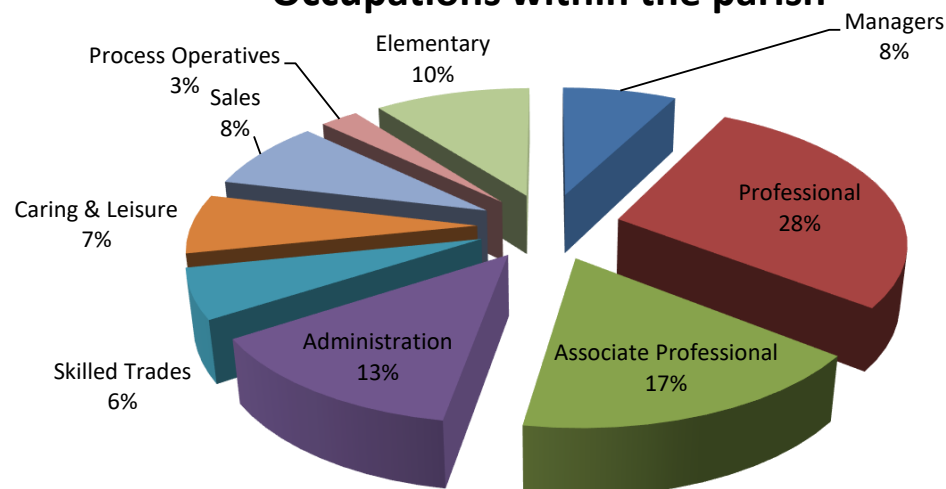
## Economic activity of those of working age (2)

### Number of hours worked per week



|                                       | less than 15 hrs | 16 to 30 hrs | 31 to 48 hrs | more than 49 hrs |
|---------------------------------------|------------------|--------------|--------------|------------------|
| EDINBURGH ST MICHAEL'S                | 7%               | 16%          | 69%          | 8%               |
| Edinburgh and West Lothian Presbytery | 7%               | 20%          | 62%          | 11%              |
| Scotland                              | 7%               | 21%          | 60%          | 12%              |

### Occupations within the parish



For definitions of occupations and industrial activities see [www.scotlandscensus.gov.uk/en/censusresults/variables.html](http://www.scotlandscensus.gov.uk/en/censusresults/variables.html)

## Top 5 Industrial Activities:

### within the parish

- 1 Financial and Insurance Activities (13.4%)
- 2 Human Health and Social Work Activities (12.6%)
- 3 Education (12.1%)
- 4 Wholesale and Retail Trade, Repair of Motor Vehicles and Motorcycles (10.8%)
- 5 Professional, Scientific and Technical Activities (9.0%)

### within the Presbytery

- 1 Human Health and Social Work Activities (13.3%)
- 2 Wholesale and Retail Trade, Repair of Motor Vehicles and Motorcycles (13.2%)
- 3 Financial and Insurance Activities (9.9%)
- 4 Education (9.3%)
- 5 Professional, Scientific and Technical Activities (7.4%)

### within Scotland

- 1 Human Health and Social Work Activities (15.0%)
- 2 Wholesale and Retail Trade, Repair of Motor Vehicles and Motorcycles (15.0%)
- 3 Education (8.4%)
- 4 Construction (8.0%)
- 5 Manufacturing (7.7%)

Census Tables: KS6045Ca/KS608SC/KS605SC

## What to do next

This profile has given you some information about your local community from Scotland's Census 2011. This is not an end in itself, but rather a starting place for you to explore further.

Resources to help you do this are available from the Mission and Discipleship Council at [www.resourcingmission.org.uk](http://www.resourcingmission.org.uk)

These include *Who is my neighbour*, training materials for making use of this profile for different purposes, and *Future Focus*, a process to examine the life of the congregation and community.

Questions to consider might include:

- > What is the profile of our congregation?
- > How does it compare to the local population?
- > What other churches are in the area? Which parts of the community do they reach? Which parts of the community are being missed?
- > What other local organisations or centres are there that might bring people into our parish? Examples might include work, public services, leisure, shops and voluntary organisations. How can we interact with these people?
- > What areas of our parish do we know well, or less well?
- > How does the local community change between weekdays and weekends?
- > How helpful is our website? Are we correctly placed on the ChurchFinder? [http://cos.churchofscotland.org.uk/church\\_finder/](http://cos.churchofscotland.org.uk/church_finder/)

## Sources of further information

**Scottish Index of Multiple Deprivation**  
[simd.scotland.gov.uk/publication-2012/](http://simd.scotland.gov.uk/publication-2012/)

Data on income, health, education, access, crime, housing and employment deprivation.

**Scottish Neighbourhood Statistics**  
[sns.gov.uk](http://sns.gov.uk)

This site brings together a lot of data from various agencies in Scotland and includes material on health, education, poverty, unemployment, housing, population, crime and social/community issues. It is particularly useful between Census dates.

**Scottish Public Health Observatory**  
[www.scotpho.org.uk/profiles](http://www.scotpho.org.uk/profiles)

This site holds a lot of information about health and related issues. The 2010 Health and Wellbeing Profiles are available at "Intermediate Zone" level (around 6,000 people).

## Notes

All parish-level Census data is based on 2011 Census Output Areas as released by National Records of Scotland ([www.nrscotland.gov.uk](http://www.nrscotland.gov.uk)). An Output Area is associated with a parish if its population weighted centroid falls within the parish boundary.

Any errors or omissions in Church of Scotland parish boundaries should be reported to the relevant Presbytery Clerk for onward transmission to Ministries Council.

Any errors or omissions in the ChurchFinder details should be notified to [itdept@cofscotland.org.uk](mailto:itdept@cofscotland.org.uk)

10/03/2022